



O-class

TECHNICAL INFORMATION



O-class - 15.125 DWCC

RoLo Ice Class 1A, Gearless, tween-decker, side doors.

GENERAL PARTICULARS

Ships	Oranjeborg
Shipyard	Stocznia Remontowa Nauta S.A.
Classification	Lloyd's Register
Class notations	100A1 Roll on-Roll off Cargo Ship, *IWS, LI Ice class 1AS LMC, UMS, NAV1
Ice class	Finnish/Swedish 1A Super
Port of registry	Delfzijl
Flag	Dutch
Year	2004

MAIN PARTICULARS

DWAT	15.126	mt
DWCC summer	15.125	mt
Length over all	158,84	m
Breadth over all	25,60	m
Draft summer	9,017	m
Draft in ballast	9,000	m
Depth (moulded)	16,30	m
GT	18.289	
NT	5.485	

ENGINES

Main engine	2 x Wärtsilä 6L46C, 6.300 kW
Reduction gear	Elec-Hydr. Rotary Vane type, Rudder Angle
Propeller	1 x controllable pitch propeller, 4 blades, Ø 5700mm
Bow thruster	1.200 kW

CARGO CAPACITIES

- 1 stern ramp for access to main deck, W= 12,00 m / H= 6,40m
- Weather deck folding type hatch covers Hold 1, 2 & 4
- 3 sideloaders SWL 16 mts each
- Permanent tweendeck in holds 1, 3 and 4
- Movable tweendeck in hold 2
- Lower hold is divided with WT bulkhead doors into 3 departments
- Cargo Holds are equipped with airdryers

Ramp dimensions:

Length	18 m (excluding endflaps, endflaps: 3 m)
Wide	14,90m

STORO hold volume

Upper holds:	17.270 m ³
Lower holds:	7.499 m ³
Total:	24.679 m ³

LOLO hold volume:

Upper hold 1:	4.395 m ³
Hold 2:	8.145 m ³
Upper hold 4:	3.472 m ³
Total	16.011 m ³

Deck Areas:

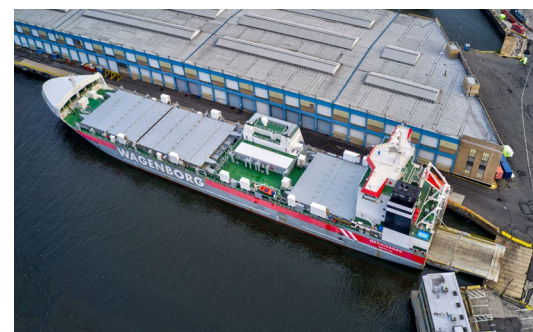
Upper holds	2.307,70 m ³
Lower holds	1.237,70 m ³

Strengths

Max pressure tanktop	16,00 mt/m ²
Max pressure tween deck	9,30 mt/m ²

Uniform

Max pressure tanktop	16,00 mt/m ²
Max pressure tween deck	9,30 mt/m ²

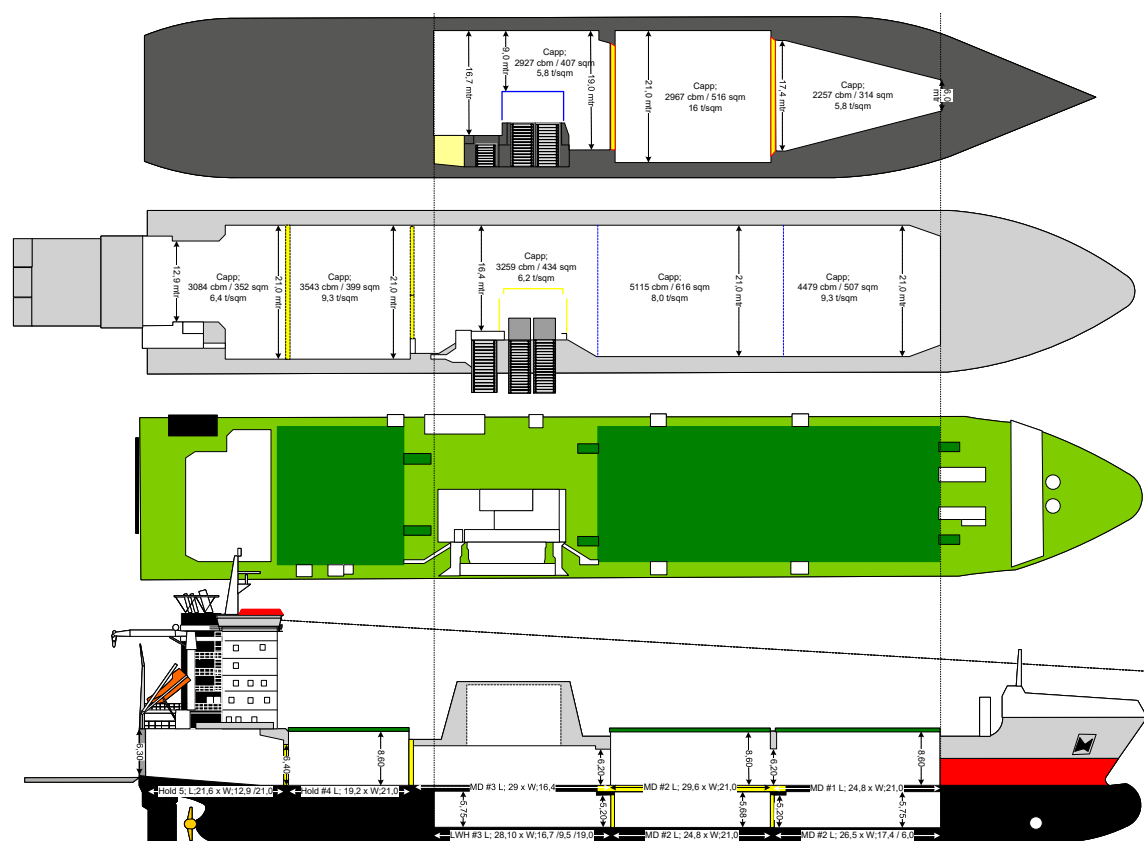


Wagenborg Shipping

Marktstraat 10, 9934 CK Delfzijl, Netherlands | P.O. Box 14, 9930 AA Delfzijl, Netherlands
T +31 596 636 911 | E chartering@wagenborg.com | wagenborg.com



O-class - stowage plan



Wagenborg Shipping

Marktstraat 10, 9934 CK Delfzijl, Netherlands | P.O. Box 14, 9930 AA Delfzijl, Netherlands

T +31 596 636 911 | E chartering@wagenborg.com | wagenborg.com