



# IJ-class

TECHNICAL INFORMATION



# IJ-class - 11.000 DWCC

Open hatch, fully box, double skinned, Ice Class 1A. Tween-decker convertible into Single-decker. Lakes / Grain / CO<sub>2</sub> fitted. Not NAABSA fitted.

## GENERAL PARTICULARS

Ships	IJborg, IJsselborg, IJzerborg, Morgenstond II
Shipyard	Damen Shipyards
Classification	Lloyd's Register
Class notations	+ 100 A1, Strengthened for Heavy Cargoes, Container Cargoes in all holds and on all hatch covers, LI, IWS, Ice Class 1A FS at a draught of 8,117 m + LMC, UMS
Ice class	Finnish/Swedish 1A
Port of registry	Delfzijl
Flag	Dutch
Year	2007 - 2010

## MAIN PARTICULARS

DWAT	12.006	mt
DWCC summer	11.000	mt
Length over all	142,95	m
Breadth over all	18,90	m
Draft summer	7,945	m
Depth (moulded)	10,95	m
GT	8.999	
NT	4.585	

## ENGINES

Main engine	MAK 6M43C, 6.000 kW
Bow thruster	730 kW

## HOLDS & HATCHES

Holds	2 holds, 2 hatches. Fully open hatch, no understow, fully box and double skinned.
Hatches	Coops & Nieborg steel pontoon hatches.

## CARGO CAPACITIES

Hold dimensions	50,40 x 14,34 x 11,47m
	61,60 x 14,34 x 11,47m
Total intake	609.000 cbft grain/bale
Hold #1	556.331 cbft grain/bale
Hold #2	373.629 cbft grain/bale
Container intake	686 TEU nominal total - 80 reefer plugs connections

## BULK HEADS & TWEEN DECKS

The vessel is equipped with a full tweendeck, consisting of loose tweendeck pontoons. Tweenecks can be used as bulkheads at every 20ft interval.

### Hold no 1:

2 panels A type	6,93 x 15,65 m	Weight abt. 30,410 tons/ each
2 panels B type	5,05 x 15,65 m	Weight abt. 24,062 tons/ each
1 panel C type	3,71 x 15,65 m	Weight abt. 17,494 tons
1 panel D type	6,72 x 10,33 m	Weight abt. 20,254 tons
1 panel E type	6,16 x 5,09 m	Weight abt. 10,258 tons

### Hold no. 2:

8 panels A type	6,93 x 15,65 m	Weight abt. 30,410 tons/ each
-----------------	----------------	-------------------------------

### Strengths

Max pressure tanktop	18,00 mt/m <sup>2</sup>
Max tween deck	4,00 mt/m <sup>2</sup>
Max pressure weatherdeck	1,75 mt/m <sup>2</sup>

### Uniform

## CARGO CRANES

2 deck cranes fixed on starboard side - each with a capacity of 80 mts @ 14 m or 60 mts @ 18 m. The cranes can be combined up to 160 mts. Free distance between the cranes is abt. 50 meters.

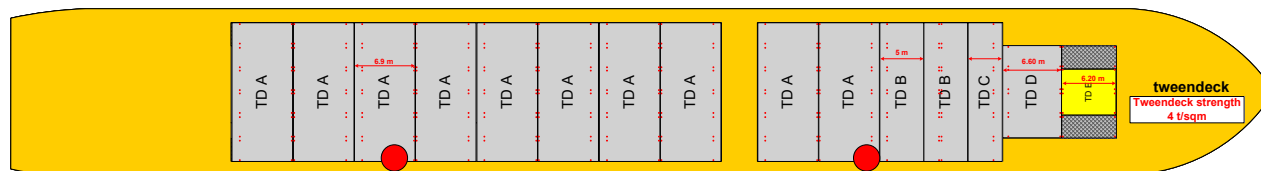
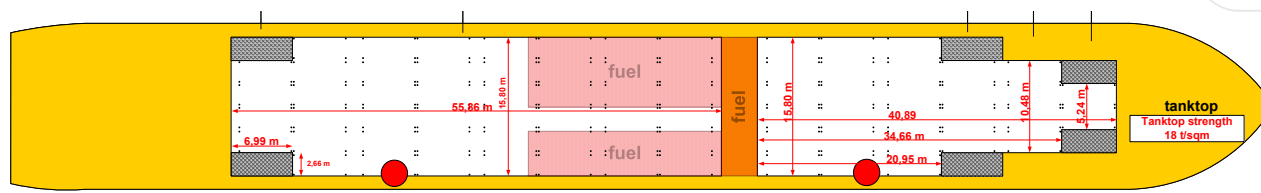


## Wagenborg Shipping

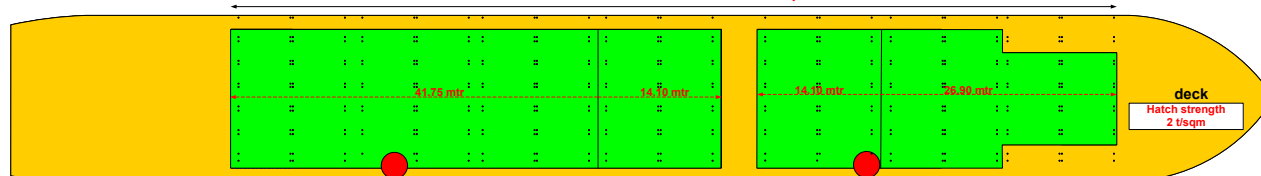
Marktstraat 10, 9934 CK Delfzijl, Netherlands | P.O. Box 14, 9930 AA Delfzijl, Netherlands  
T +31 596 636 911 | E chartering@wagenborg.com | wagenborg.com



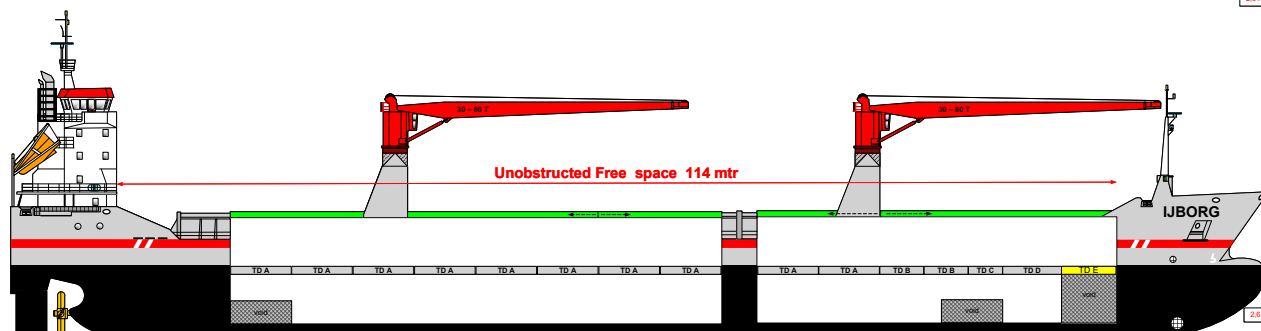
# IJ-class - stowage plan



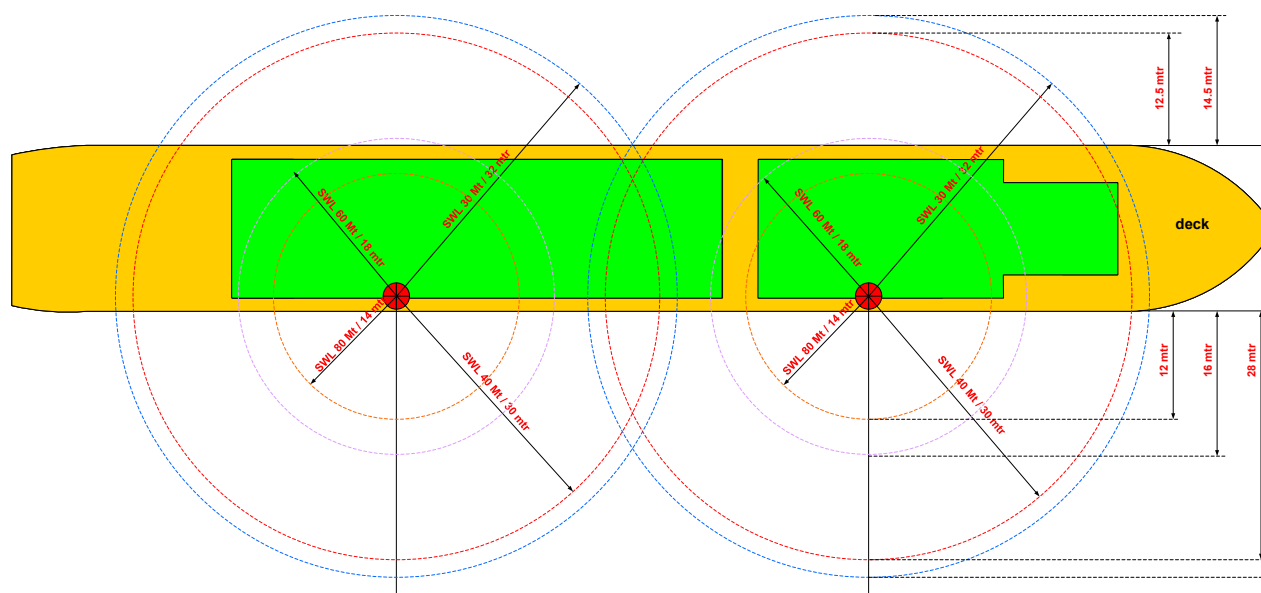
Unobstructed Free deck space 100 mtr



2.61 m



2.61 m



## Wagenborg Shipping

Marktstraat 10, 9934 CK Delfzijl, Netherlands | P.O. Box 14, 9930 AA Delfzijl, Netherlands

T +31 596 636 911 | E chartering@wagenborg.com | wagenborg.com