



Z-class

TECHNICAL INFORMATION



Z-class - 7.500 DWCC

Part Tween-decker - MPP - Ice Class 1A. Open hatch, fully box, double skinned, part tweendecker.
Grain / CO₂ fitted

GENERAL PARTICULARS

Ships	Zaanborg, Zijlborg, Ziltborg
Shipyard	Bodewes Shipyard
Classification	Lloyd's register
Class notations	100A1 Strengthened For Heavy Cargoes; Container Cargoes in Holds and on Upperdeck Hatch Covers Ice Class 1A LMC, UMS, BWTS*
Ice class	Finnish/Swedish 1A
Port of registry	Delfzijl
Flag	Dutch
Year	2000 - 2001

MAIN PARTICULARS

DWAT	7.900	mt
DWCC summer	7.500	mt
Length over all	118,55	m
Breadth over all	15,20	m
Draft summer	7,062	m
Draft in ballast	4,110	m
Depth (moulded)	8,45	m
GT	4.938	
NT	2.361	

ENGINES

Main engine	Caterpillar MaK 8M32C, 3.840 kW
Bow thruster	300 kW

HOLDS & HATCHES

Holds	2 Holds / 2 Hatches. Fully open hatch, no understow, fully box and double skinned.
Hatches	Steel pontoon hatches

CARGO CAPACITIES

Hold dimensions	39,00 x 12,65x 9,45m 42,80 x 12,65x 9,45m
Total intake	329.633 cbft grain/bale
Hold #1	152.060 cbft grain/bale
Hold #2	177.573 cbft grain/bale

BULK HEADS AND TWEEN DECKS

Vessel is equipped with 1 moveable bulkhead, moveable by means of hatch cover gantry crane.

Strengths

Max pressure tanktop	15,00 mt/m ²
Max pressure weatherdeck	1,75 mt/m ²

Uniform

Max pressure tanktop	15,00 mt/m ²
Max pressure weatherdeck	1,75 mt/m ²

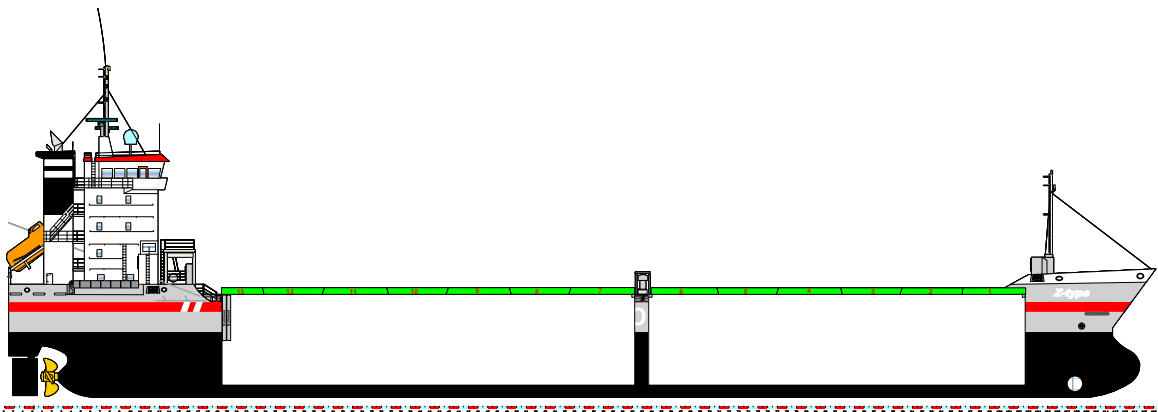
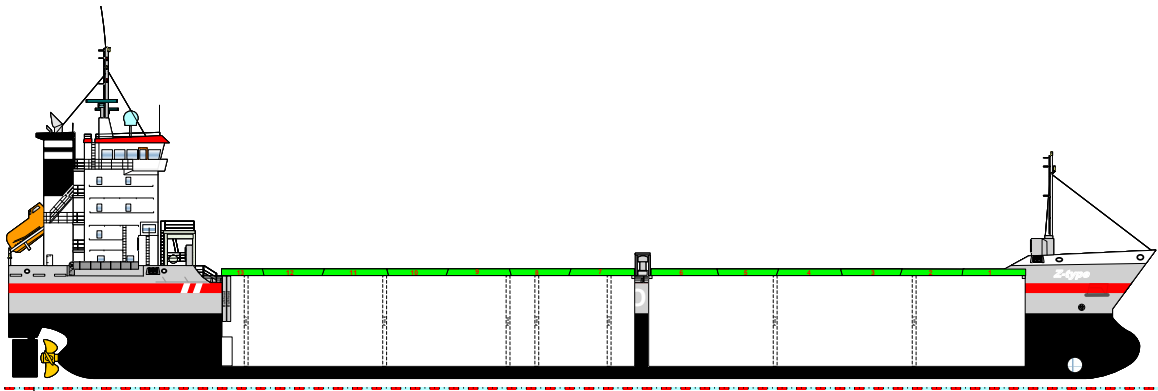
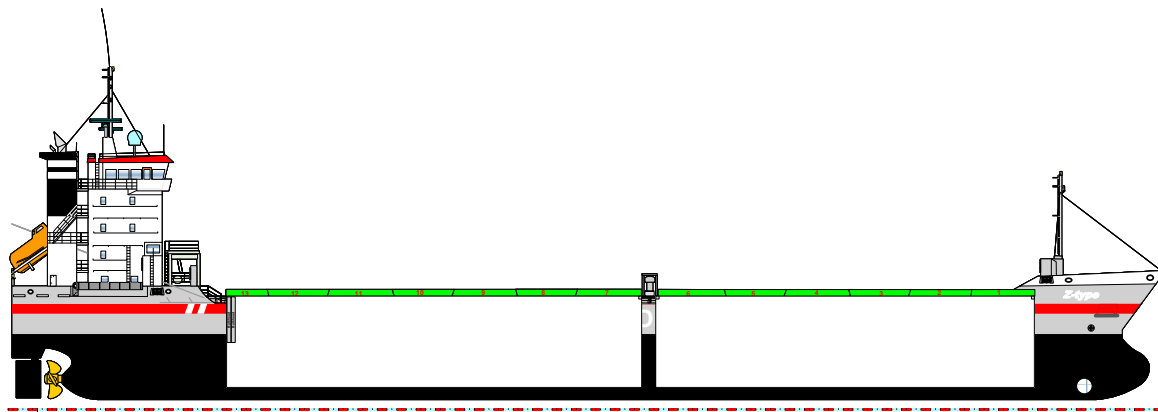
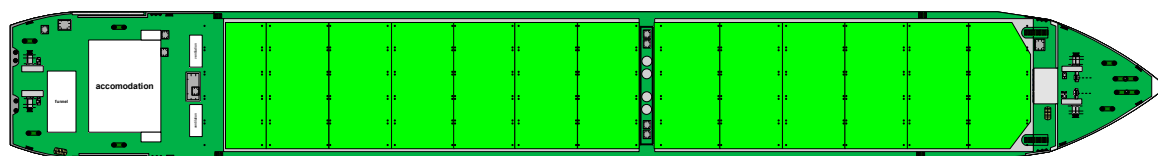
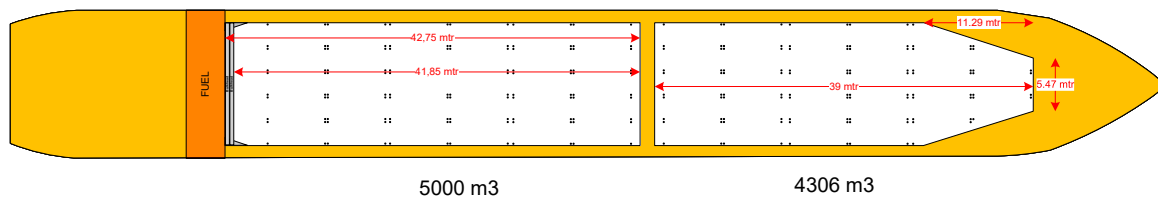


Wagenborg Shipping

Marktstraat 10, 9934 CK Delfzijl, Netherlands | P.O. Box 14, 9930 AA Delfzijl, Netherlands
T +31 596 636 911 | E chartering@wagenborg.com | wagenborg.com



Z-class - stowage plan



Wagenborg Shipping

Marktstraat 10, 9934 CK Delfzijl, Netherlands | P.O. Box 14, 9930 AA Delfzijl, Netherlands
T +31 596 636 911 | E chartering@wagenborg.com | wagenborg.com