



663 DWT pontoon

TECHNICAL INFORMATION



663 DWT pontoon

GENERAL PARTICULARS

Pontoons	Wagenborg Barge 12
Owner	Wagenborg Towage
Type	Pontoon, Inland & Harbour, ballastible, deck cargo
Classification	Pontoon
Port of Registry	Delfzijl, The Netherlands
ENI	2209756
Flag	Dutch
Built	1993

MAIN DIMENSIONS

LOA	50m
BOA	11.68m
Depth (mld.)	2.0 m
Deck area (~)	500m ²
Draught (mld.)	1.54m

TONNAGE

Lightweight	150t
Deadweight	663t
Deck load (uniform)	5 t/m ²

MOORING ARRANGEMENT

Bollards	4 x double bollard
Mooring	4 x mooring wire

ANCHOR SYSTEM

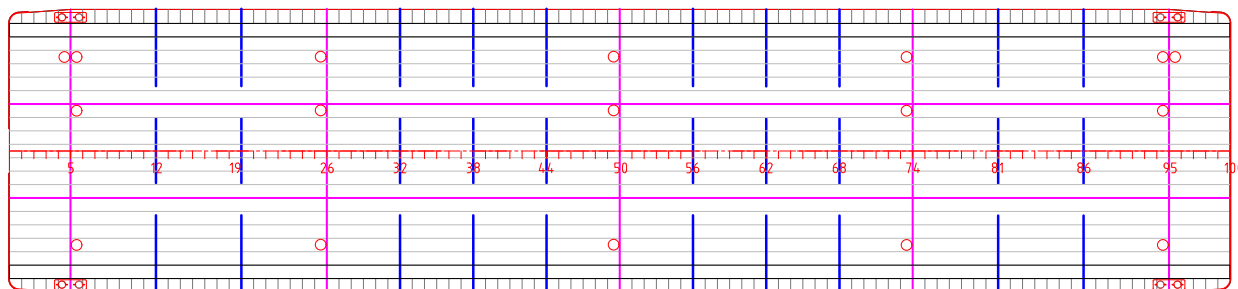
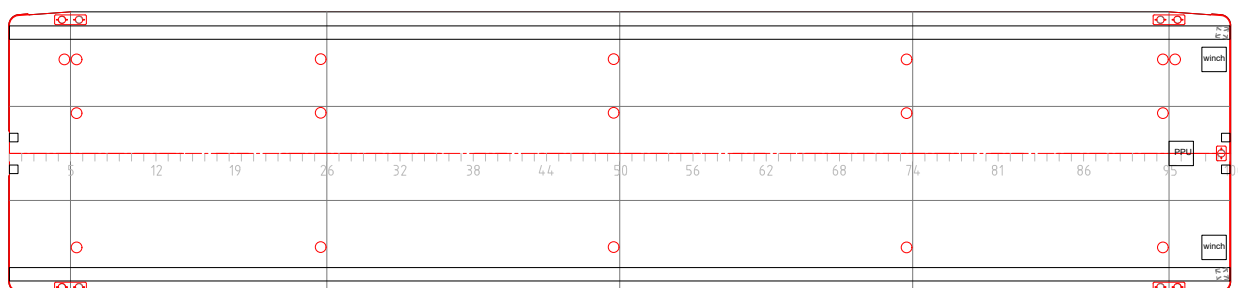
Anchor	Anchor + manual winch
--------	-----------------------

BALLAST SYSTEM

Pump	External ballast pumps applicable.
------	------------------------------------

EXTRA

Coupling winch	2 x Hydraulic winches with PPU
----------------	--------------------------------



Wagenborg Towage

Marktstraat 10, 9934 CK Delfzijl, Netherlands | P.O. Box 14, 9930 AA Delfzijl, Netherlands
T +31 596 636 911 | E towage@wagenborg.com | wagenborg.com