



D-class

TECHNICAL INFORMATION



D-class - 8.350 DWCC

Open hatch, fully box, double skinned, Ice Class 1A. Lakes/ Grain/ CO₂ fitted.

GENERAL PARTICULARS

Ships	Diezeborg, Dintelborg, Dongeborg
Shipyard	GS Yard B.V.
Classification	Bureau Veritas
Class notations	I HULL MACH General cargo ship - heavycargo (15 T/m ²) - nonhomload (18 T/m ²); Container Ship, Unrestricted navigation, AUT-UMS, SYS-NEQ-1, MON-SHAFT, ICE CLASS IA, LASHING
Ice class	Finnish/Swedish 1A
Port of registry	Delfzijl
Flag	Dutch
Year	1999 - 2000

MAIN PARTICULARS

DWAT	8.867	mt
DWCC summer	8.350	mt
Length over all	133,41	m
Breadth over all	15,85	m
Draft summer	7,10	m
Draft in ballast	4,10	m
Depth (moulded)	9,80	m
GT	6.219	
NT	3.331	

ENGINES

Main engine	Wärtsilä 8L38, 5.280 kW
Propeller	Left rotating Pitch propeller
Bow thruster	500 kW

HOLDS & HATCHES

Holds	2 Holds / 2 Hatches. Fully open hatch, no understow, fully box and double skinned.
Hatches	Steel pontoon hatches

CARGO CAPACITIES

Hold dimensions	41,99 x 13,20 x 10,48m
	53,61 x 13,20 x 10,48m
Total intake	447.841 cbft grain/bale (tweendeck in hold)
Hold #1	191.767 cbft grain/bale
Hold #2	256,074 cbft grain/bale

BULK HEADS AND TWEEN DECKS

Vessel is equipped with 2 moveable bulkheads, moveable by means of hatch cover gantry crane.

Strengths

Max pressure tanktop	15,00 mt/m ²
Max pressure weatherdeck	1,75 mt/m ²

Uniform

Max pressure tanktop	15,00 mt/m ²
Max pressure weatherdeck	1,75 mt/m ²

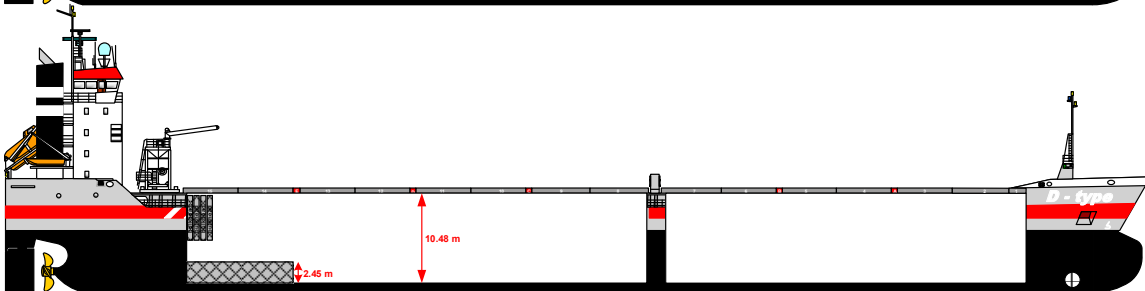
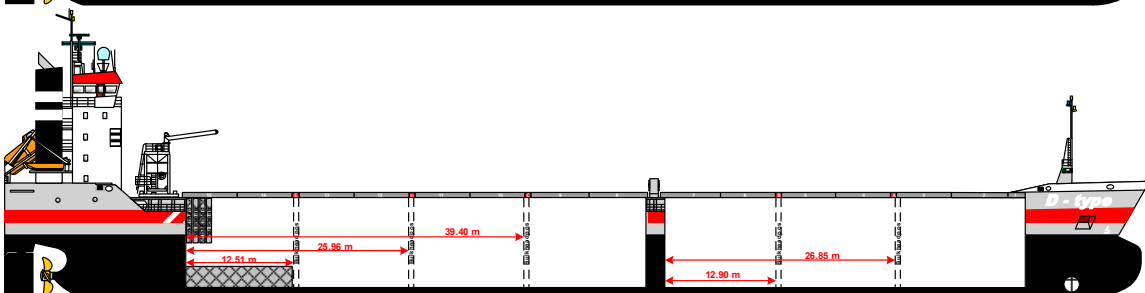
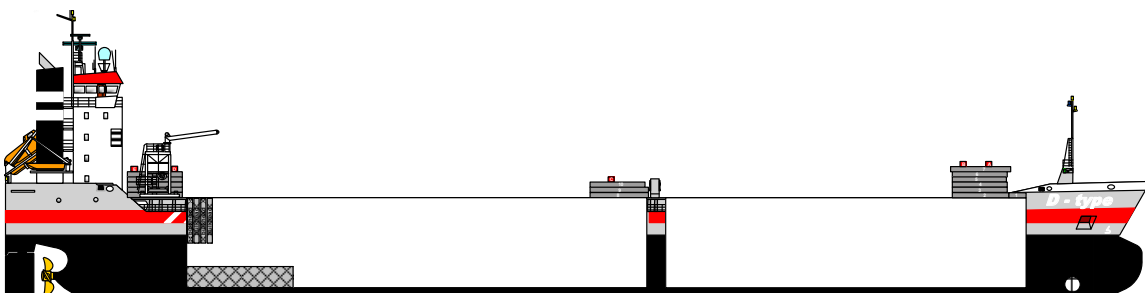
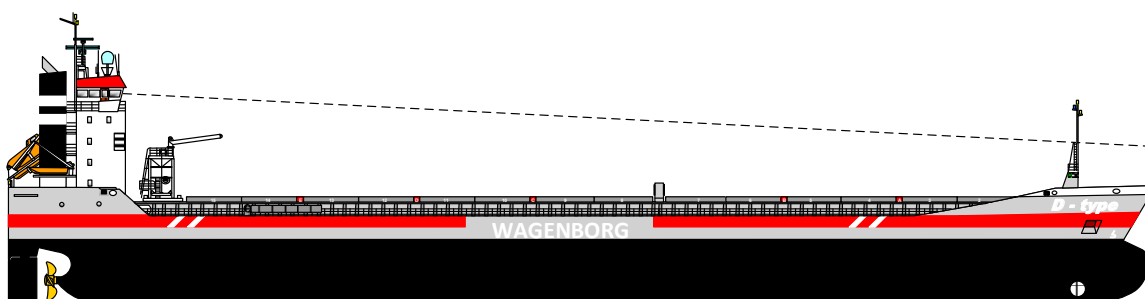
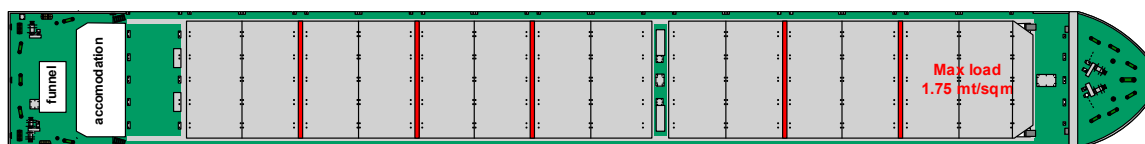
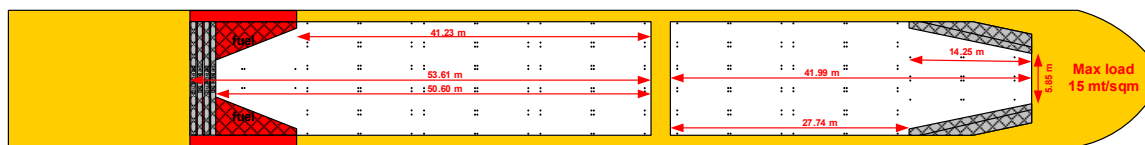


Wagenborg Shipping

Marktstraat 10, 9934 CK Delfzijl, Netherlands | P.O. Box 14, 9930 AA Delfzijl, Netherlands
T +31 596 636 911 | E chartering@wagenborg.com | wagenborg.com



D-class - stowage plan



Wagenborg Shipping

Marktstraat 10, 9934 CK Delfzijl, Netherlands | P.O. Box 14, 9930 AA Delfzijl, Netherlands
T +31 596 636 911 | E chartering@wagenborg.com | wagenborg.com