



Ferus 4.300-class

TECHNICAL INFORMATION



Ferus 4.300-class - 4.300 DWCC

Open hatch, fully box, double skinned, Single-decker, (incl. 3 movable bulkheads).
Lakes, Grain, CO₂ fitted.

GENERAL PARTICULARS

Ships	Scheldebank, Skagenbank, Steenbank
Shipyard	Ferus Smit
Classification	Bureau Veritas
Class notations	i HULL MACH, General Cargo Ship - heavycargo (inner bottom 147kN/m ²) Container Ship, Unrestricted navigation, AUT-UMS; ICE CLASS 1A
Ice class	Finnish/Swedish 1A
Port of registry	Delfzijl
Flag	Dutch
Year	2005 - 2007

MAIN PARTICULARS

DWAT	
DWCC summer	
Lenght over all	
Breadth over all	6.665 mt
Draft summer	6.400 mt
Draft in ballast	110,78 m
Depth (moulded)	14,00 m
GT	6,520 m
NT	3,800 m
	8,13 m
	3.990

ENGINES

Main engine	2.208 Caterpillar MaK 8M25, 2.640 kW
Propeller	Lips adjustable pitch, Ø 3200mm
Bow thruster	335 kW

HOLDS & HATCHES

Holds	2 Holds / 2 Hatches. Fully open hatch, no understow, fully box and double skinned. Vessel is equipped with
-------	--

cement holes.

Hatches Steel pontoon hatches

CARGO CAPACITIES

Hold dimensions	27,58 x 11,47x 9,00m 50,88 x 11,47x 9,00m
Total intake	278.042 cbft grain/bale
Hold #1	92.247 cbft grain/bale
Hold #2	185.795 cbft grain/bale

BULK HEADS AND TWEEN DECKS

Vessel is equipped with 2 movable bulkheads, movable by means of hatch cover gantry crane.

Strengths

Max pressure tanktop	
Max pressure weatherdeck	

Uniform

15,00 mt/m ²
1,50 mt/m ²

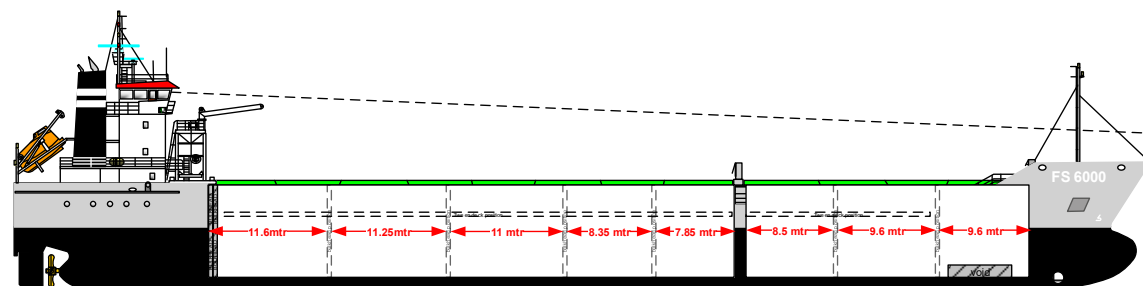
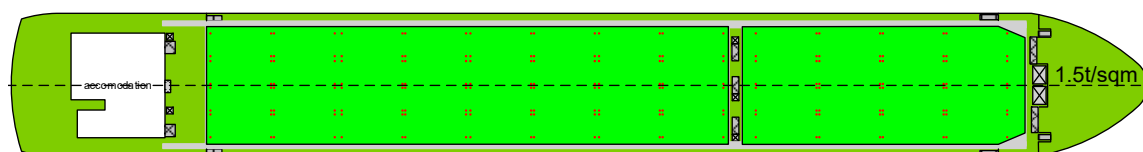
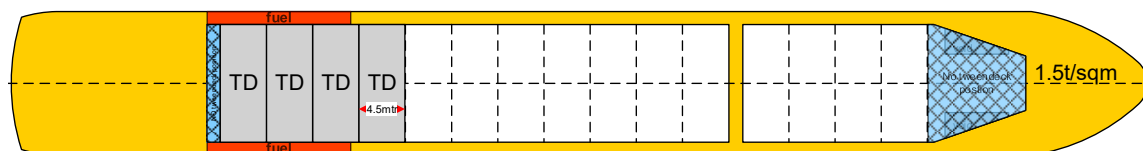
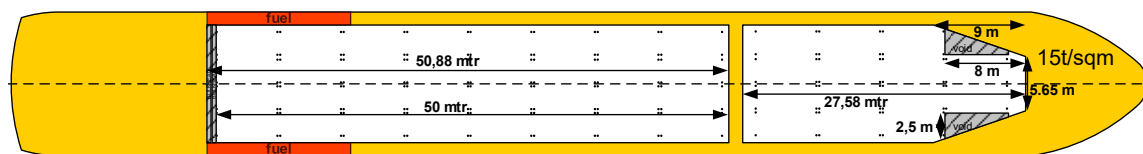


Wagenborg Shipping

Marktstraat 10, 9934 CK Delfzijl, Netherlands | P.O. Box 14, 9930 AA Delfzijl, Netherlands
T +31 596 636 911 | E chartering@wagenborg.com | wagenborg.com



Ferus 4.300-class - stowage plan



Wagenborg Shipping

Marktstraat 10, 9934 CK Delfzijl, Netherlands | P.O. Box 14, 9930 AA Delfzijl, Netherlands

T +31 596 636 911 | E chartering@wagenborg.com | wagenborg.com