



# Diving support Statiaborg

TECHNICAL INFORMATION





# Diving support vessel Statiaborg

## GENERAL

Yard	Royal Niestern Sander, NL
Year	2012/2017
Flag	Dutch
Class	Bureau Veritas
Class notations	V I, +HULL, +MACH; Tug, Supply Vessel; +AUT-UMS; DYNPOS AM-AT/R; Unrestricted navigation; INWATERSURVEY

## DIMENSIONS

Length overall	69.40 m
Length bpp	64.99 m
Length waterlines	67.00 m
Breadth over all	14.30 m
Breadth (moulded)	14.00 m
Depth	5.10 m
Design draught	2.50 m
Corrsp. deadweight	318 t
Maximum draught	3.15 m
Deadweight	TBA
Bollard pull	36 t

## CAPACITIES

Fuel oil bunkers	650 m <sup>3</sup>
Fuel set and day tanks	37 m <sup>3</sup>
Treated water	263 m <sup>3</sup>
Potable water	300 m <sup>3</sup>
Zero dumping	29 m <sup>3</sup>
Cargo Deck	425 m <sup>2</sup>
Deck strength	5 t/m <sup>2</sup>

## PROPULSION

Main generators	2 x 2.000 kW Caterpillar, 3516 HD
Auxiliary generators	1 x 250 kW Caterpillar C9
Propellers	2 x 1.750 kW Wärtsilä ICEPODS FS 1750BOP-ICE
Bowthrusters	2 x 600 kW Veth Tunnel VT-700, 1.500 rpm

## ACCOMMODATION

Complement	24 persons
Cabins	4 single cabins 10 double cabins

## CARGO & DECK EQUIPMENT

Deck crane	1 x Redrock 25.0 hydraulic telescopic crane
Lifting capacity	SWL 25 t @ 10m
Anchor and mooring system	4 x anchor winches 4 x Flipper Delta anchor Rollers Fairleads Anchor racks
Stern Roller	SWL 50t

## (SAT) DIVING SYSTEM

POMMEC portable, SATuration diving system  
A-frame with bell and 2 man chamber  
4 Man saturation chamber  
Sat and Dive control container, 20 feet

## FIRE FIGHTING SYSTEM

1 x Mobile 20ft Containerized Fire Pump – 2.400 m<sup>3</sup>/h at 13 bar  
1 x Nijhuis Venus 1-350-650 FiFi Fire water pump  
1 x Marine CUMMINS KTA 50-M2 FiFi diesel engine

## SAFETY EQUIPMENT

Lifesaving arrangement in accordance with SOLAS  
Fast rescue boat - Norsafe Merlin 615 diesel jet with ND  
Rescue zone and hoisting equipment for rescue operations  
2 x Life rafts (16 pers each), 2 x Life rafts (12 pers each)  
24 Survival suits, 4 Anti-exposure immersion suits  
24 Life jackets

## NAVIGATION

Integrated bridge system fore and aft bridge  
X-Band Radars: 1 x 8' Scanner & 1 x 5' Scanner  
1 x Rutter Ice Radar system, with dedicated scanner  
1 x gyro & 1 magnetic compass  
1 x standard and 1 x shallow water echo sounder  
1 x meteo system  
ECDIS: 1 x SAM Electronics & 1 x Transas  
2 x 2000W Xenon Search Lights  
2 x 1000W Halogen Search Lights  
1 x Praxis DP2+ Tautwore

## COMMUNICATIONS

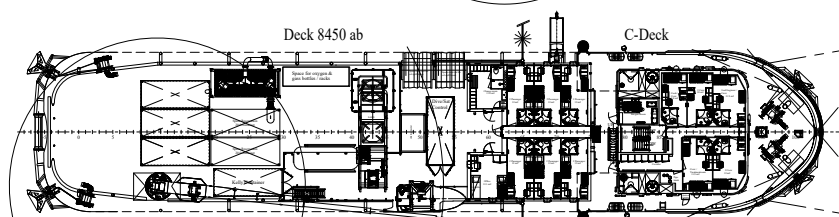
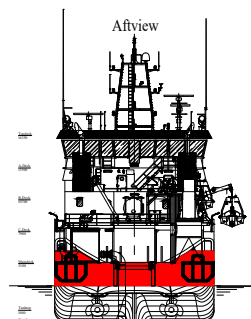
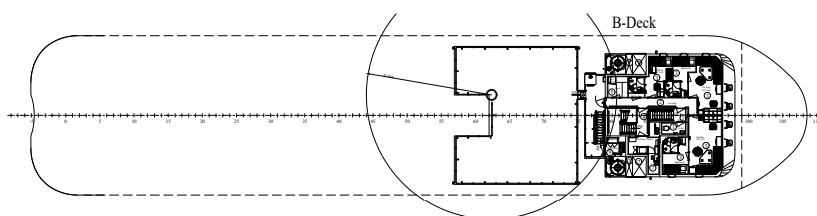
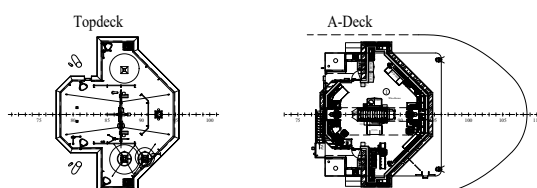
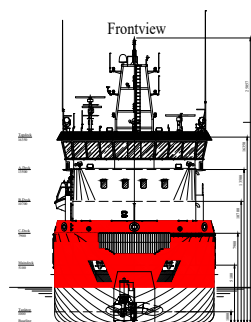
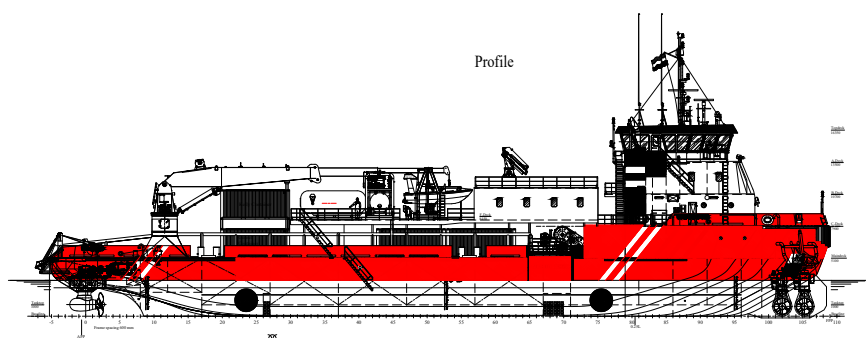
Full GMDSS area A3 installation  
1 x Mini V-SAT for data communication  
1 x Aeronautical band communication  
1 x Iridium

## Wagenborg Offshore

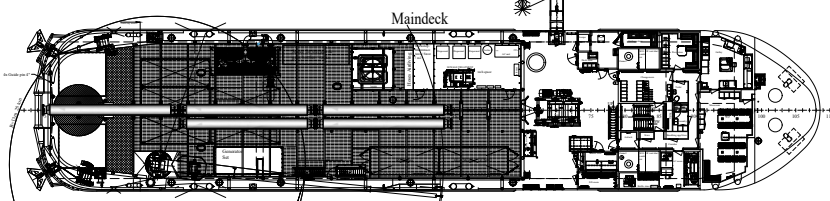
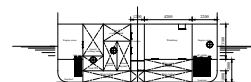
Marktstraat 10, 9934 CK Delfzijl, Netherlands | P.O. Box 14, 9930 AA Delfzijl, Netherlands  
T +31 596 636 911 | E [offshore.commercial@wagenborg.com](mailto:offshore.commercial@wagenborg.com) | [wagenborg.com](http://wagenborg.com)



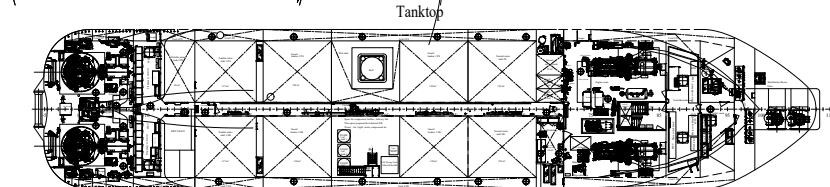
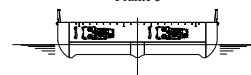
# Diving support vessel Statiaborg



Frame 68

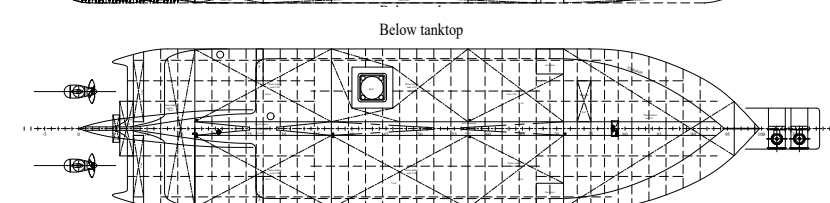


Frame 5



MAIN PARTICULARS

Length over all	66.40 m.
Length between perpendiculars	64.00 m.
Length Waterline	67.00 m.
Beam over all	14.00 m.
Beam moulded	14.00 m.
Depth	5.20 m.
draught design	5.20 m.
draught design (1 000 kg/m <sup>3</sup> )	5.00 m.
draught on average load	5.15 m.
draught design (1 000 kg/m <sup>3</sup> )	4.75 m.
Ballast port	100 m <sup>3</sup>
Ballast Area	100 m <sup>2</sup>
C-Deck Area	100 m <sup>2</sup>
GRT	100 GRT
NT	100 NT



REV. E2	New position Fid unit	03-01-2017	N
REV. D	General update	16-01-2017	M
REV. C	General update	14-12-2016	M
REV. B	General update: 4th NOV 2016 incl comments N/STAR	04-11-2016	M
REV. A	General update: 4th Oct 2016	04-10-2016	M

WAGENBORG SHIPPING B.V.

GENERAL ARRANGEMENT  
REVISIONS

NIESTERN // SANDER

160002

0001

## Wagenborg Offshore

Marktstraat 10, 9934 CK Delfzijl, Netherlands | P.O. Box 14, 9930 AA Delfzijl, Netherlands  
 T +31 596 636 911 | E offshore.commercial@wagenborg.com | wagenborg.com