



L-class

TECHNICAL INFORMATION



L-class - 6.900 DWCC

Open hatch, fully box, double skinned, Ice Class 1A, Single-decker incl. 2 movable bulkheads.
Lakes / Grain / CO₂ fitted.

GENERAL PARTICULARS

Ships	Laganborg, Lauwersborg, Lingeberg, Loireborg
Shipyard	Koninklijke Niestern Sander
Classification	Bureau Veritas
Class notations	I HULL MACH General cargo ship -heavycargo ([inner bottom: 147 kN/m ²]); Container ship, Unrestricted navigation, AUT-UMS, SYS-NEQ, MON- SHAFT, ICE CLASS IA, INWATERSURVEY
Ice class	Finnish/Swedish 1A
Port of registry	Delfzijl
Flag	Dutch
Year	2007 - 2008

MAIN PARTICULARS

DWAT	7.433	mt
DWCC summer	6.900	mt
Length over all	122,34	m
Breadth over all	14,40	m
Draft summer	6,51	m
Draft in ballast	4,20	m
Depth (moulded)	8,10	m
GT	4.695	
NT	2.558	

ENGINES

Main engine	Caterpillar MaK 9M25, 2.970 kW
Bow thruster	350 kW

HOLDS & HATCHES

Holds	2 Holds / 2 Hatches. Fully open hatch, no understow, fully box and double skinned.
Hatches	Steel pontoon hatches

CARGO CAPACITIES

Hold dimensions	45,18 x 11,71 x 8,98m 44,48 x 11,71 x 8,98m
Total intake	323.779 cbft grain/bale
Hold #1	159.787 cbft grain/bale
Hold #2	163.992 cbft grain/bale

BULK HEADS AND TWEEN DECKS

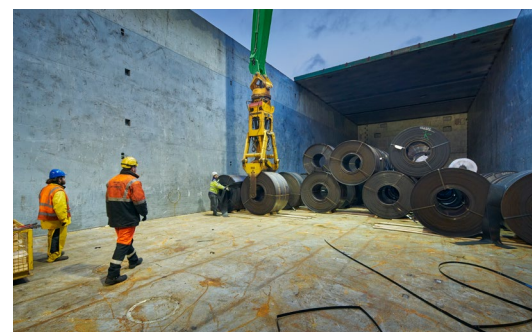
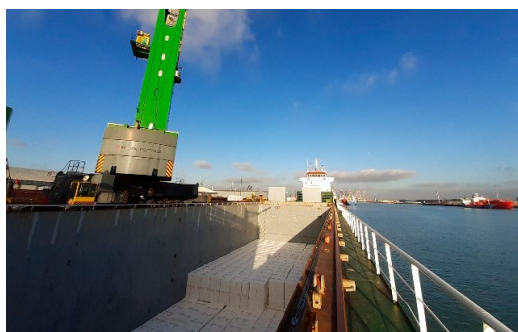
Vessel is equipped with 2 moveable bulkheads, moveable by means of hatch cover gantry crane.

Strengths

Max pressure tanktop	15,00 mt/m ²
Max pressure weatherdeck	1,50 mt/m ²

Uniform

Max pressure tanktop	15,00 mt/m ²
Max pressure weatherdeck	1,50 mt/m ²

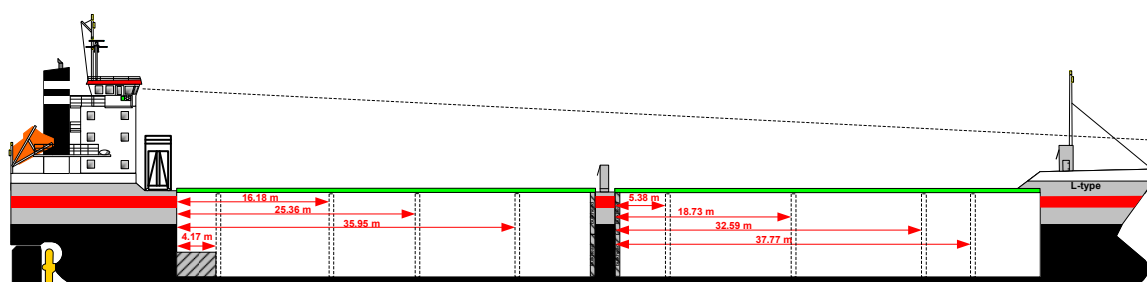
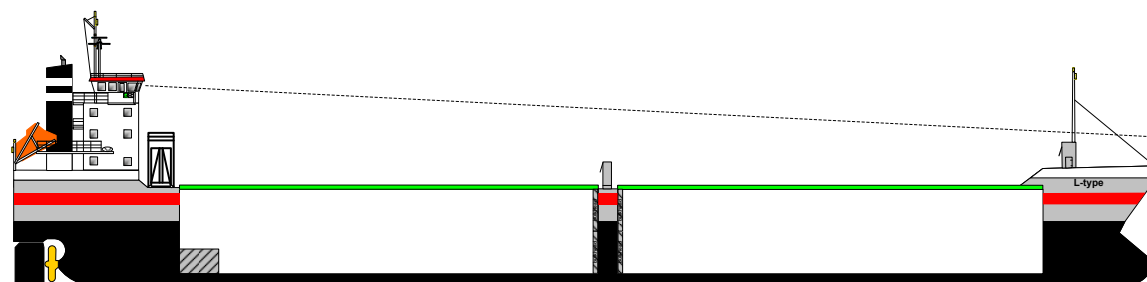
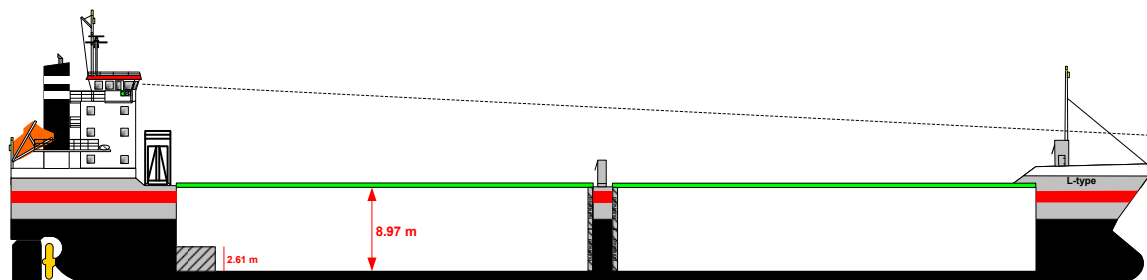
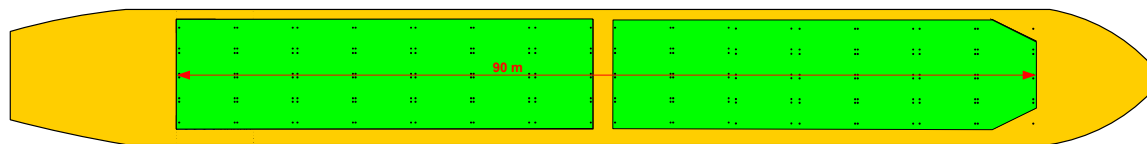
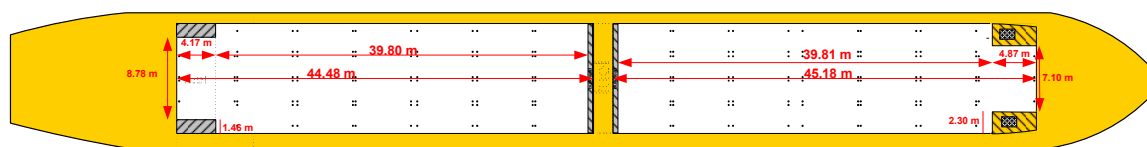


Wagenborg Shipping

Marktstraat 10, 9934 CK Delfzijl, Netherlands | P.O. Box 14, 9930 AA Delfzijl, Netherlands
T +31 596 636 911 | E chartering@wagenborg.com | wagenborg.com



L-class - stowage plan



Wagenborg Shipping

Marktstraat 10, 9934 CK Delfzijl, Netherlands | P.O. Box 14, 9930 AA Delfzijl, Netherlands
T +31 596 636 911 | E chartering@wagenborg.com | wagenborg.com