



N-class

TECHNICAL INFORMATION



N-class - 19.600 DWCC

Open hatch fully box/ double skinned, Tweendecker convertible into Singledecker, incl 4 movable bulkheads. Lakes / Grain / CO₂ fitted.

GENERAL PARTICULARS

Ships	Nassauborg
Shipyard	Fujian Mawei Shipbuilding Ltd
Classification	Lloyd's Register
Class notations	+100A1 Strengthened for Heavy Cargoes, LI, Ice Class 1A FS, LMC, UMS, NAV 1
Ice class	Finnish/Swedish 1A Super
Port of registry	Delfzijl
Flag	Dutch
Year	2006

MAIN PARTICULARS

DWAT	23.000	mt
DWCC summer	19.600	mt
Length over all	174,10	m
Breadth over all	22,00	m
Draft summer	9,38	m
Draft in ballast	6,20	m
Air draft in ballast	35,50	m
Depth (moulded)	12,80	m
GT	16.037	
NT	6.827	

ENGINES

Main engine	Hyundai Man B&W 6S50 MC 92480 kW
Bow thruster	1.000 kW

HOLDS & HATCHES

Holds	4 Holds / 4 Hatches. Fully open hatch, no understow, fully box and double skinned.
Hatches	Hydraulic folding hatches.

CARGO CAPACITIES

Hold dimensions	24,80 x 18,80 x 14,00m
	27,40 x 18,80 x 14,00m
	27,40 x 18,80 x 14,00m
	24,80 x 18,80 x 14,00m
Total intake	934.919 cbft grain/bale (tweendeck in hold)
Hold #1	195.042 cbft grain/bale
Hold #2	254.680 cbft grain/bale
Hold #3	254.680 cbft grain/bale
Hold #4	230.517 cbft grain/bale

BULK HEADS AND TWEEN DECKS

Vessel is equipped with 4 moveable bulkheads, moveable by means of hatch cover gantry crane.

Tweendeck weights

Hold# 1:	2 x 33 mt + 2 x 24 mt
Hold# 2:	4 x 33 mt + 1 x 14 mt
Hold# 3:	4 x 33 mt + 1 x 14 mt
Hold# 4:	4 x 33 mt

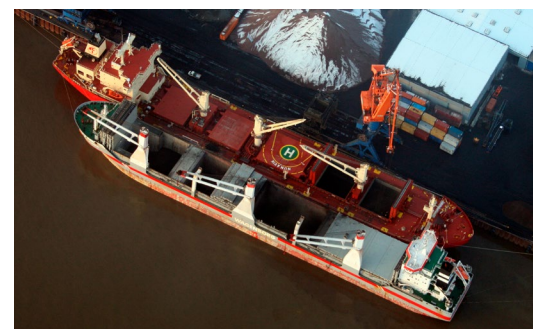
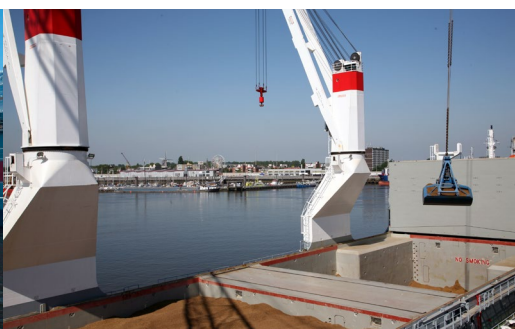
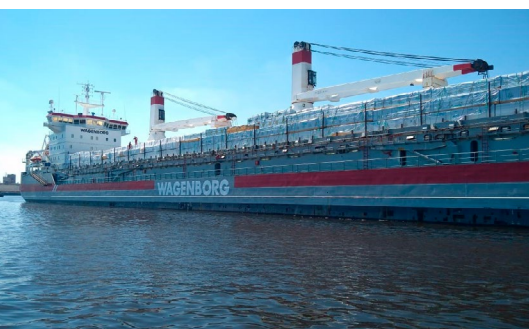
Strengths

Max pressure tanktop	14,50 mt/m ²
Max pressure tweendeck	4,00 mt/m ²
Max pressure weatherdeck	2,00 mt/m ²

Uniform

CARGO CRANES

- 3 cranes fixed on portside with:
 - a capacity of 35 mts @16m
 - a combined capacity of 70 mts

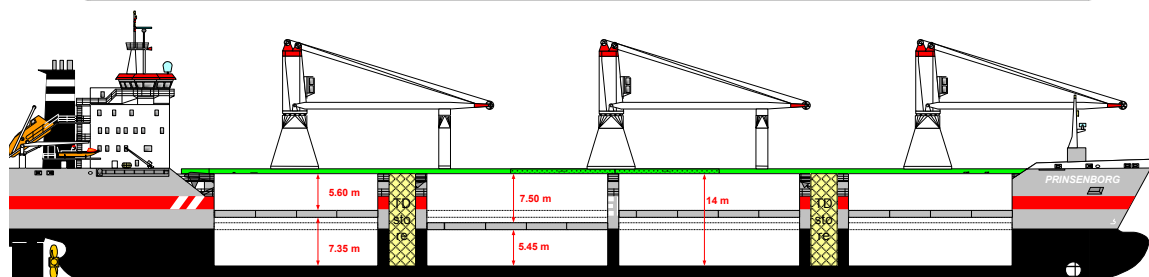
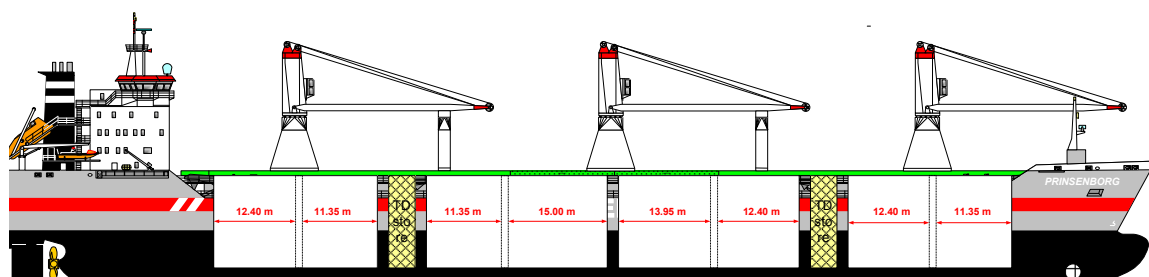
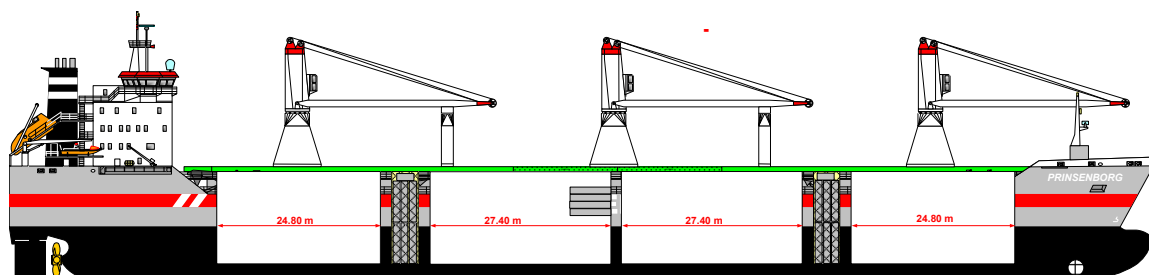
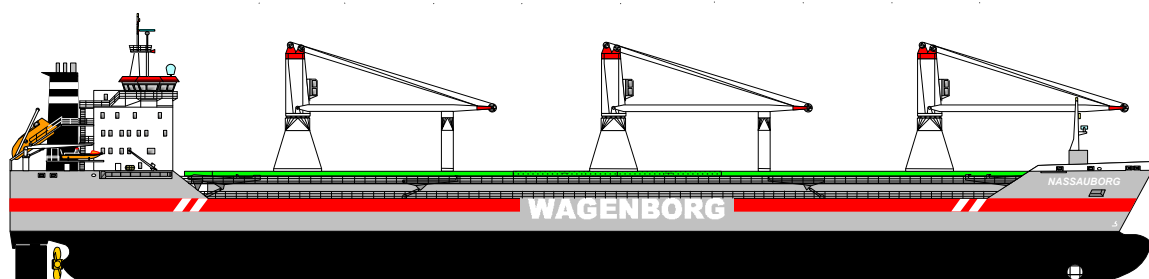
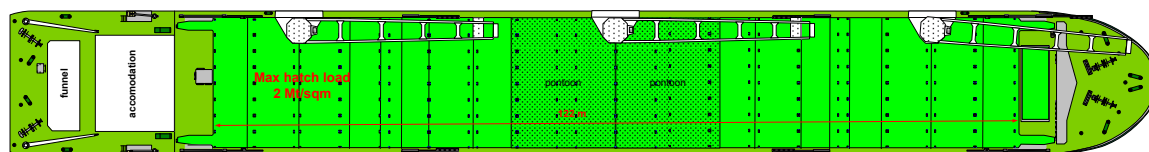
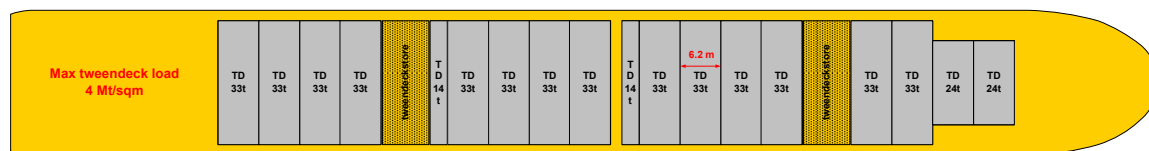
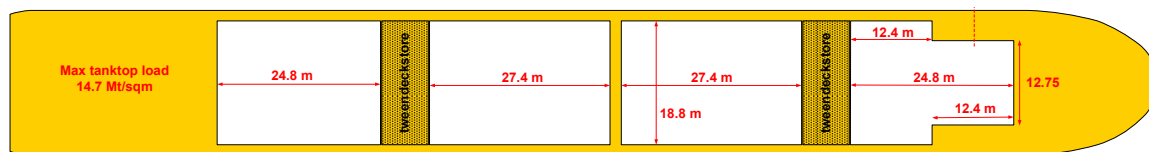


Wagenborg Shipping

Marktstraat 10, 9934 CK Delfzijl, Netherlands | P.O. Box 14, 9930 AA Delfzijl, Netherlands
T +31 596 636 911 | E chartering@wagenborg.com | wagenborg.com



N-class - stowage plan



Wagenborg Shipping

Marktstraat 10, 9934 CK Delfzijl, Netherlands | P.O. Box 14, 9930 AA Delfzijl, Netherlands
T +31 596 636 911 | E chartering@wagenborg.com | wagenborg.com