



A-class

TECHNICAL INFORMATION



A-class - 15.750 DWCC

Openhatch fully box/ double skinned ice class 1A geared, tween-decker convertible into single-decker Lakes / Grain / CO₂ fitted.

GENERAL PARTICULARS

Ships	Amstelborg, Arneborg, Amazoneborg, Americaborg, Azoresborg, Arubaborg, Albanyborg, Aragonborg, Andesborg, Amurborg, Alamosborg, Adriaticborg, Alaskaborg, Avonborg, Atlanticborg
Shipyard	Hudong-Zhonghua Shipbuilding Group Co. Ltd.
Classification	Lloyd's Register
Class notations	+100A1 Strengthened for Heavy Cargoes and Holds may be empty, Container Cargoes in all Holds and on Upper Deck and on all Hatch Covers, *IWS LI, ICE CLASS 1A FS at a draught of 9,895m, LMC, UMS, Nav1
Ice class	Finnish/Swedish 1A
Port of registry	Delfzijl
Flag	Dutch
Year	2006 - 2012

MAIN PARTICULARS

DWAT	17.300	mt
DWCC summer	15.750	mt
Length over all	143,00	m
Breadth over all	21,50	m
Draft summer	9,690	m
Draft in ballast	5,800	m
Depth (moulded)	11.864	m
GT	5.650	
NT		

ENGINES

Main engine	Wärtsilä 8L46B, 7.800 kW
Propeller	Wärtsilä propulsion, 4 blades, 4800mm
Bow thruster	750 kW

HOLDS & HATCHES

Holds	Fully open hatch, no understow, fully box and double skinned.
Hatches	Hydraulic steel pontoon hatches.

CARGO CAPACITIES

Hold dimensions	35,80 x 17,75 x 13,50
	52,10 x 17,75 x 13,50
Total intake	707.633 cbft grain/bale (tweendecks on deck)
	655.924 cbft grain/bale (tweendeck in hold)
Hold #1	269.401 cbft grain/bale
Hold #2	438.232 cbft grain/bale

BULK HEADS / TWEEN DECKS

Full tweendeck, consisting of loose tweendeck pontoons, which can be used as vertical bulkheads at every 20ft interval.

Tweendeck sizes

No. 1	9,90m x 3,22m x 0,90m	- abt. 6 tons
No. 2 + 3	12,57m x 6,48m x 0,90m	- abt. 25 tons
No. 4 - 14	17,65m x 6,48m x 0,90m	- abt. 33 tons

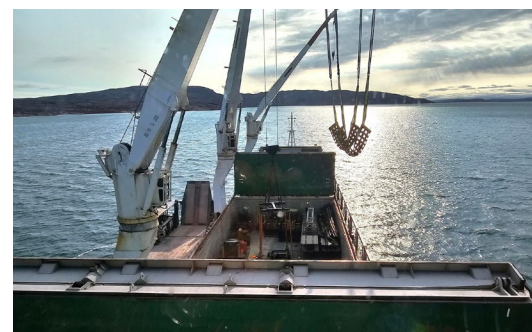
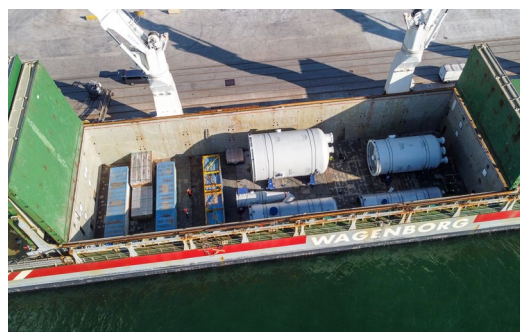
Strengths

Max pressure tanktop	20,00 mt/m ²
Max pressure tweendeck	4,00 mt/m ²
Max pressure weatherdeck	1,75 mt/m ²

Uniform

CARGO CRANES

- 3 cranes fixed on portside with:
 - a capacity of 60 mts @16m or 40 mts @28m
 - a combined capacity of 120 mts
 - free distance of 31 m between cranes

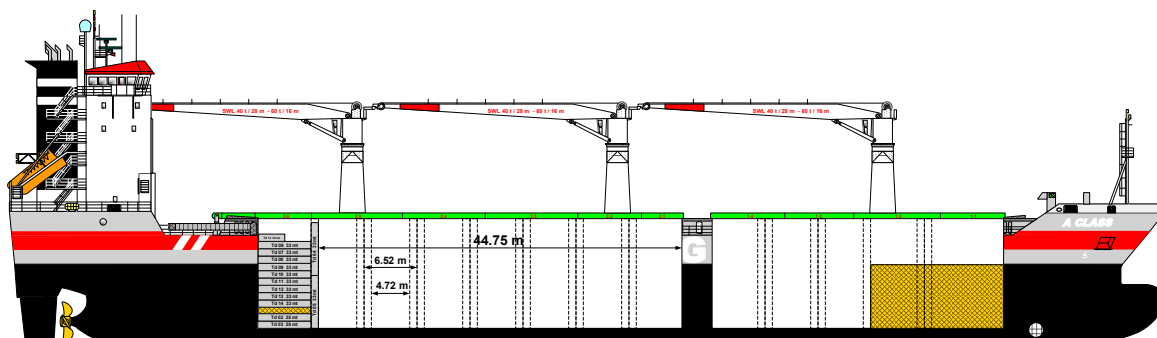
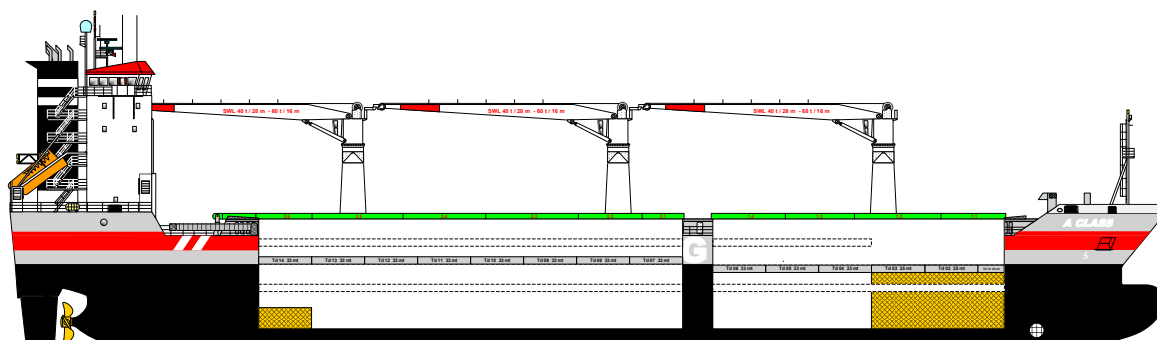
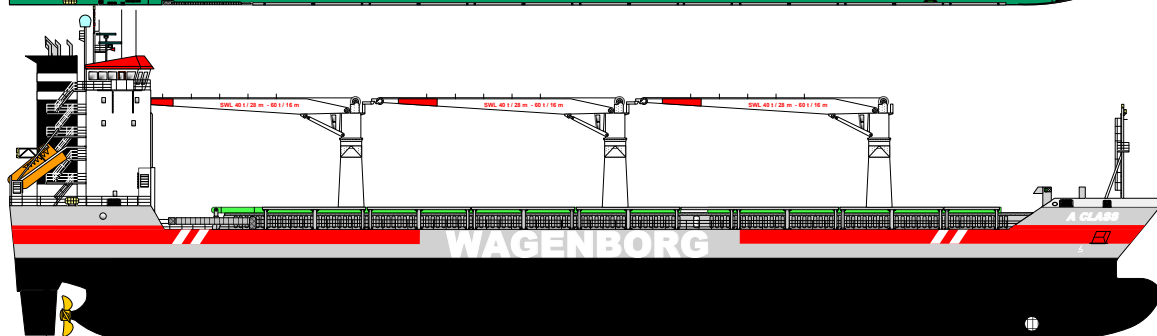
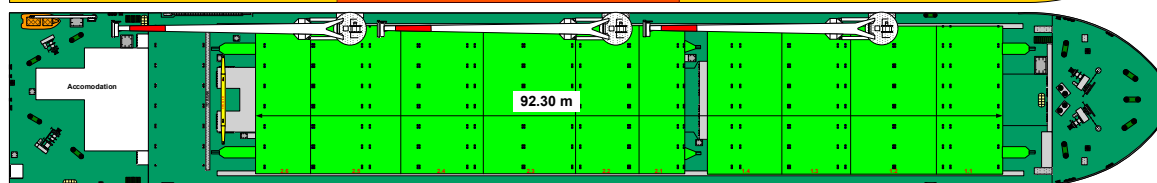
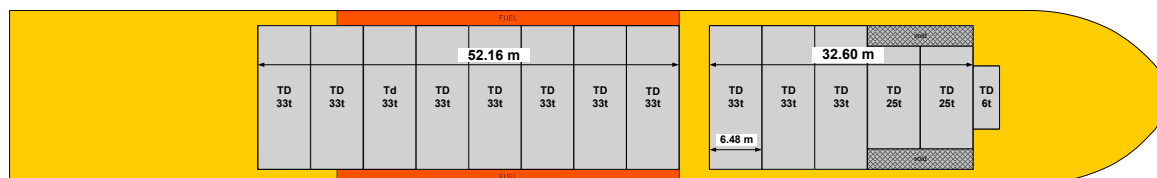
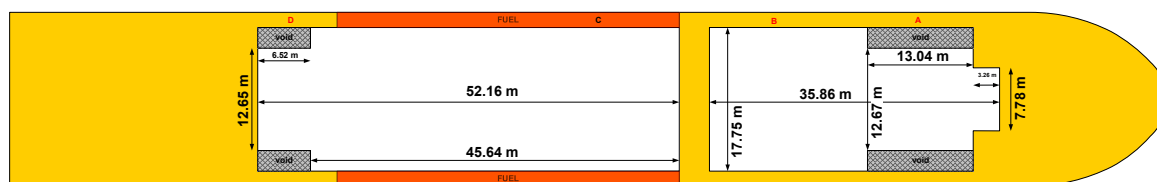


Wagenborg Shipping

Marktstraat 10, 9934 CK Delfzijl, Netherlands | P.O. Box 14, 9930 AA Delfzijl, Netherlands
T +31 596 636 911 | E chartering@wagenborg.com | wagenborg.com



A-class - stowage plan



Wagenborg Shipping

Marktstraat 10, 9934 CK Delfzijl, Netherlands | P.O. Box 14, 9930 AA Delfzijl, Netherlands

T +31 596 636 911 | E chartering@wagenborg.com | wagenborg.com