



# K-class

TECHNICAL INFORMATION





# K-class - 8.500 DWCC

Box shaped, Single-decker incl. 1 movable bulkhead, Ice Class 1A. Lakes / Grain / CO<sub>2</sub> fitted.

## GENERAL PARTICULARS

Ships	Koningsborg
Shipyard	Ferus Smit
Classification	Lloyd's Register
Class notations	100A1 Strengthened for Heavy Cargoes, Container Cargoes in all Holds and on all Hatch Covers, LI, Ice Class 1A FS LMC, UMS
Ice class	Finnish/Swedish 1A
Port of registry	Delfzijl
Flag	Dutch
Year	1998

## MAIN PARTICULARS

DWAT	9.067	mt
DWCC summer	8.500	mt
Length over all	130,65	m
Breadth over all	15,87	m
Draft summer	7,460	m
Draft in ballast	4,900	m
Depth (moulded)	10,20	m
GT	6.142	
NT	3.482	

## ENGINES

Main engine	Wärtsilä 6L38B, 3.960 kW
Bow thruster	500 kW

## HOLDS & HATCHES

Holds	2 Holds / 2 Hatches. Fully open hatch, no understow, fully box and double skinned.
Hatches	Steel pontoon hatches

## CARGO CAPACITIES

Hold dimensions	60,55 x 13,20 x 11,05m
	24,85 x 13,20 x 11,05m
Total intake	425.000 cbft grain/bale
Hold #1	296.500 cbft grain/bale
Hold #2	128.500 cbft grain/bale

## BULK HEADS AND TWEEN DECKS

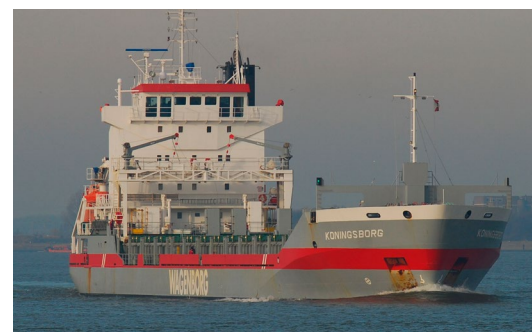
Vessel is equipped with 2 moveable bulkheads, moveable by means of hatch cover gantry crane.

## Strengths

Max pressure tanktop	15,00 mt/m <sup>2</sup>
Max pressure weatherdeck	1,50 mt/m <sup>2</sup>

## Uniform

Max pressure tanktop	15,00 mt/m <sup>2</sup>
Max pressure weatherdeck	1,50 mt/m <sup>2</sup>

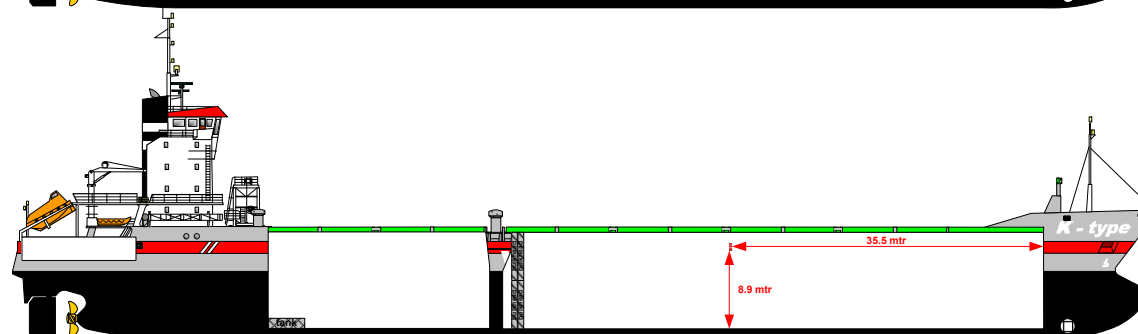
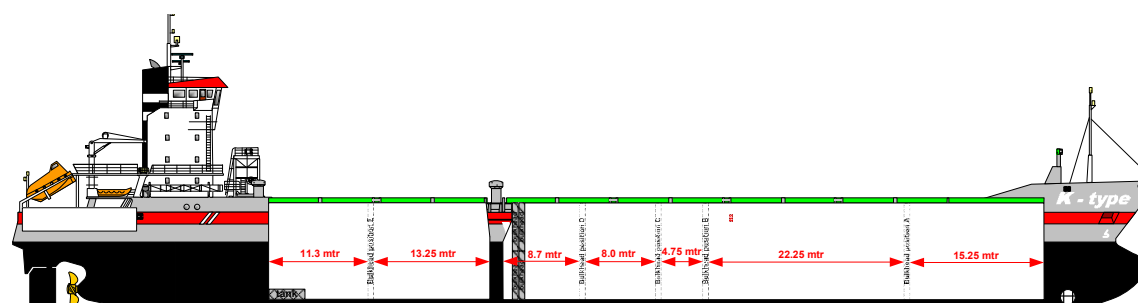
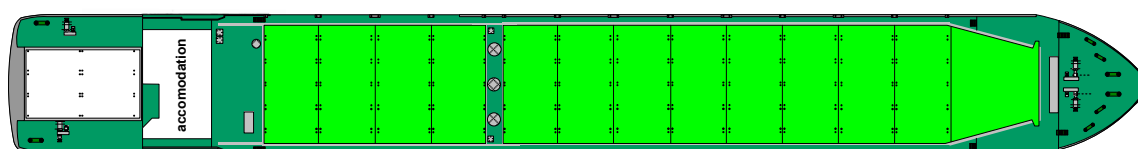
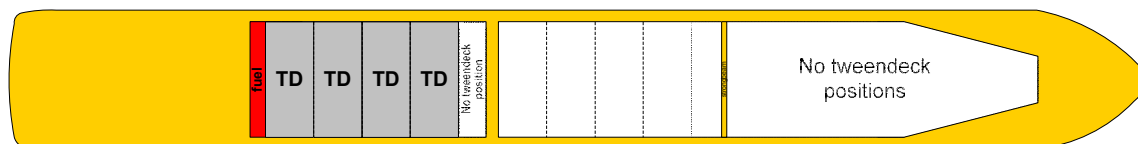
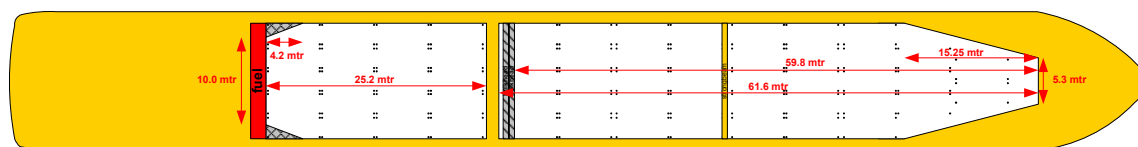


## Wagenborg Shipping

Marktstraat 10, 9934 CK Delfzijl, Netherlands | P.O. Box 14, 9930 AA Delfzijl, Netherlands  
T +31 596 636 911 | E chartering@wagenborg.com | wagenborg.com



# K-class - stowage plan



## Wagenborg Shipping

Marktstraat 10, 9934 CK Delfzijl, Netherlands | P.O. Box 14, 9930 AA Delfzijl, Netherlands

T +31 596 636 911 | E chartering@wagenborg.com | wagenborg.com