



Exl-class

TECHNICAL INFORMATION



ExI-class - 10.900 DWCC

Box shaped/ single-decker, incl. movable bulkheads. Ice Class 1A, Lakes / Grain / CO₂ fitted.

GENERAL PARTICULARS

Ships	Eeborg, Elbeborg, Exeborg
Shipyard	Koninklijke Niestern Sander
Classification	Bureau Veritas
Class notations	I HULL MACH General cargo ship -heavycargo ([inner bottom: 150 kN/m ²]); Container ship, Unrestricted navigation, AUT-UMS, SYS-NEQ, MON- SHAFT, ICE CLASS IA
Ice class	Finnish/Swedish 1A
Port of registry	Delfzijl
Flag	Dutch
Year	2011 - 2013

MAIN PARTICULARS

DWAT	11.950	mt
DWCC summer	10.900	mt
Length over all	144,56	m
Breadth over all	15,87	m
Draft summer	8,00	m
Draft in ballast	4,64	m
Depth (moulded)	11,15	m
GT	7.680	
NT	3.846	

ENGINES

Main engine	Caterpillar MaK 8M32C, 4.000 kW
Propeller	Single CCP, 4 Blades Ø 4200 mm
Bow thruster	750 kW

HOLDS & HATCHES

Holds	2 Holds / 2 Hatches. Fully open hatch, no understow, fully box and double skinned.
Hatches	Steel pontoon hatches

CARGO CAPACITIES

Hold dimensions	41,44 x 13,20 x 11,23m 54,76 x 13,20 x 11,23m
Total intake	523.237 cbft grain/bale
Hold #1	235.558 cbft grain/bale
Hold #2	287.679 cbft grain/bale

BULK HEADS AND TWEEN DECKS

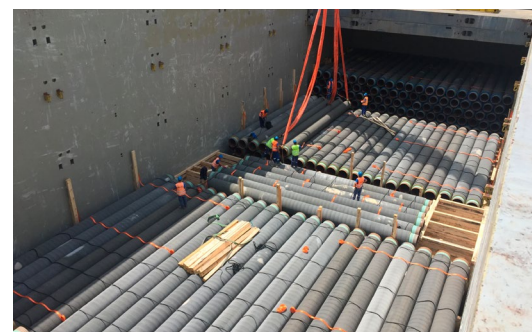
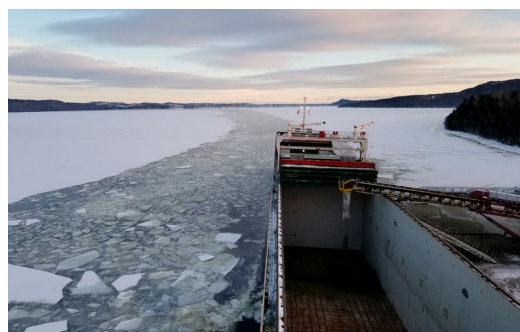
Vessel is equipped with 2 moveable bulkheads, moveable by means of hatch cover gantry crane.

Strengths

Max pressure tanktop	15,00 mt/m ²
Max pressure weatherdeck	1,75 mt/m ²

Uniform

Max pressure tanktop	15,00 mt/m ²
Max pressure weatherdeck	1,75 mt/m ²

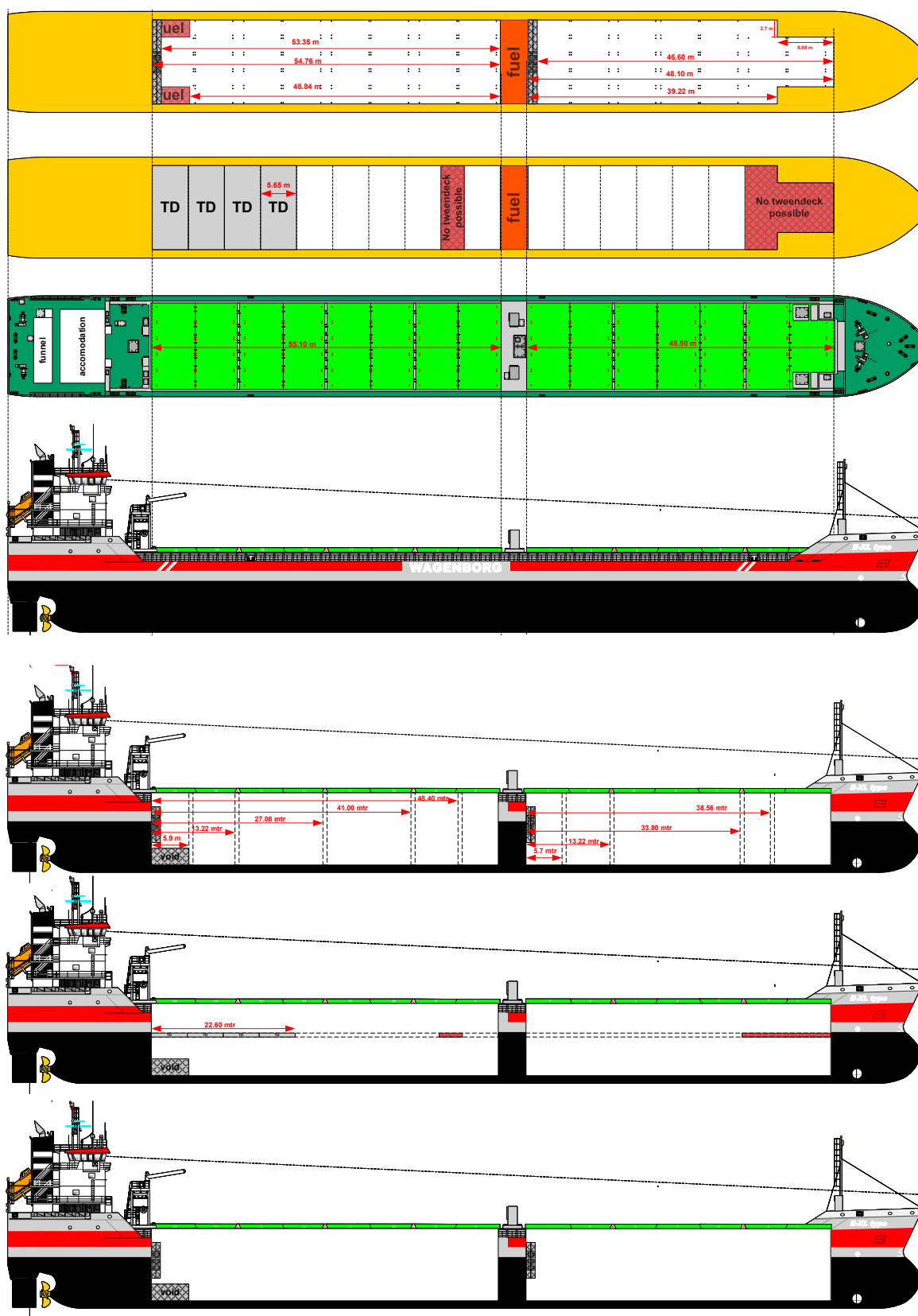


Wagenborg Shipping

Marktstraat 10, 9934 CK Delfzijl, Netherlands | P.O. Box 14, 9930 AA Delfzijl, Netherlands
T +31 596 636 911 | E chartering@wagenborg.com | wagenborg.com



ExI-class - stowage plan



Wagenborg Shipping

Marktstraat 10, 9934 CK Delfzijl, Netherlands | P.O. Box 14, 9930 AA Delfzijl, Netherlands
T +31 596 636 911 | E chartering@wagenborg.com | wagenborg.com