



XCMG XCA60_EV

Hybrid mobile telescopic crane 60-tonne



Design and engineering from Europe, construction in China

TECHNICAL SPECIFICATIONS

General features

48 metre boom
 AMT gearbox (7 forward, 1 reverse)
 5 steering positions
 Maximum speed 80 km/h

Engine Type

MTU OM0361A diesel engine (Mercedes)
 Rated power of 230 kW
 Max torque of 1300Nm

High E-Power engine
 Rated power of 170 kW
 Max output torque of 1100Nm.
 Approximately 85% of the MTU engine.

30% fuel saving

Hybrid technology

AC charging
 DC charging
 50 metre cable
 Electrical winding & unwinding of cable reels
 Charging up to 380V: 8A - 63A.
 Charging can easily be done on site with 8 or 16A, no 32A or 63A required.
 6 to 8 hours of electrical operation without power loss.

Fully electric operation without mains connection thanks to built-in 115 kWh high capacity lithium-ion battery.

Batteries can be charged from a mains socket or diesel engine, with excess power recharging the battery pack.

Counterweight

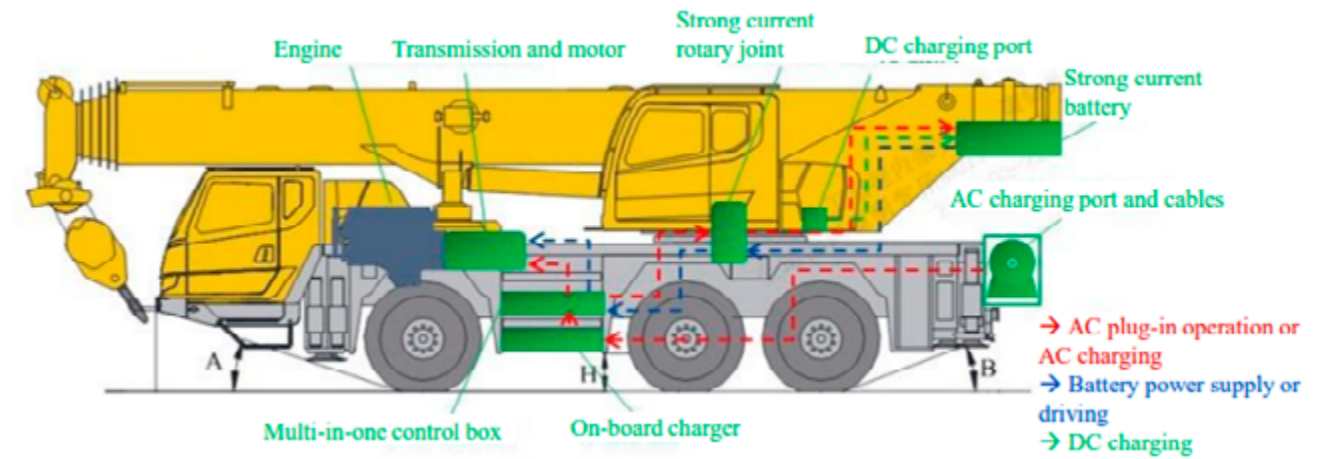
5.1 tonne standard counterweight on crane
 115 kWh battery used as counterweight
 Max. total counterweight weight: 13.2 tonnes

Standard extras

Air conditioning
 Central heating
 Cameras (bird's eye view)
 Tilting cab
 Touch screens
 5.1 ton ballast standaard op de kraan
 115 kWh accu, gebruikt als ballast
 Max. totaal ballastgewicht: 13.2 ton

"400 kWh hybrid drive. 230 kWh Mercedes diesel engine & 170 kWh electric motor. 100% electric lifting".





Sustainable. For Sure.

Wagenborg Nedliff's sustainability strategy contains concrete targets, set up to the year 2050. Reducing CO2 emissions is one of the main targets. We do this out of an intrinsic motivation to keep our planet liveable for future generations. And, of course, we have to comply with laws and regulations in the places where we operate.

Together with XCMG, we have found an innovative solution to this challenge:
The world's first 60-tonne hybrid mobile telescopic crane.

What makes this state-of-the-art crane so unique? The machine is mass-produced. This enables Wagenborg Nedliff to switch relatively quickly when market demand increases.

For our customers, the sustainability challenge is at least as great. Using sustainable equipment, such as the XCMG XCA60_EV, helps to meet stricter environmental requirements and emission standards.

Emission-free hoisting

Zero emissions when lifting. Without sacrificing speed and efficiency. No harmful emissions, so better for the environment and a smaller carbon footprint.

Integrated battery

An innovative feature is the battery integrated in the crane's counterweight. The XCMG XCA60_EV can run on electricity for 6-8 hours. This is a significant saving compared to, for example, an additional battery truck, resulting in lower operating costs.

Flexible charging options

- * Charging up to 380V: 8A - 63A.
- * Charging can easily be done on site with 8 or 16A, no need for 32A or 63A.
- * For maximum flexibility, the XCMG XCA60_EV automatically switches back to 8A.

Ultra-low fuel consumption

The sustainability calculations that our customers have to make include mileage and consumption from site to site. Thanks to a unique hybrid system, the XCA60_EV has exceptionally low fuel consumption, which counts for something.

Regenerative charging

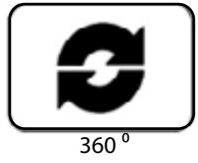
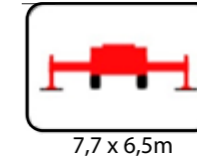
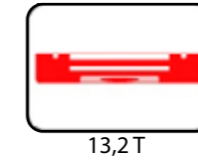
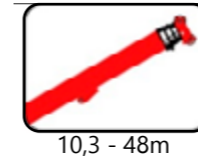
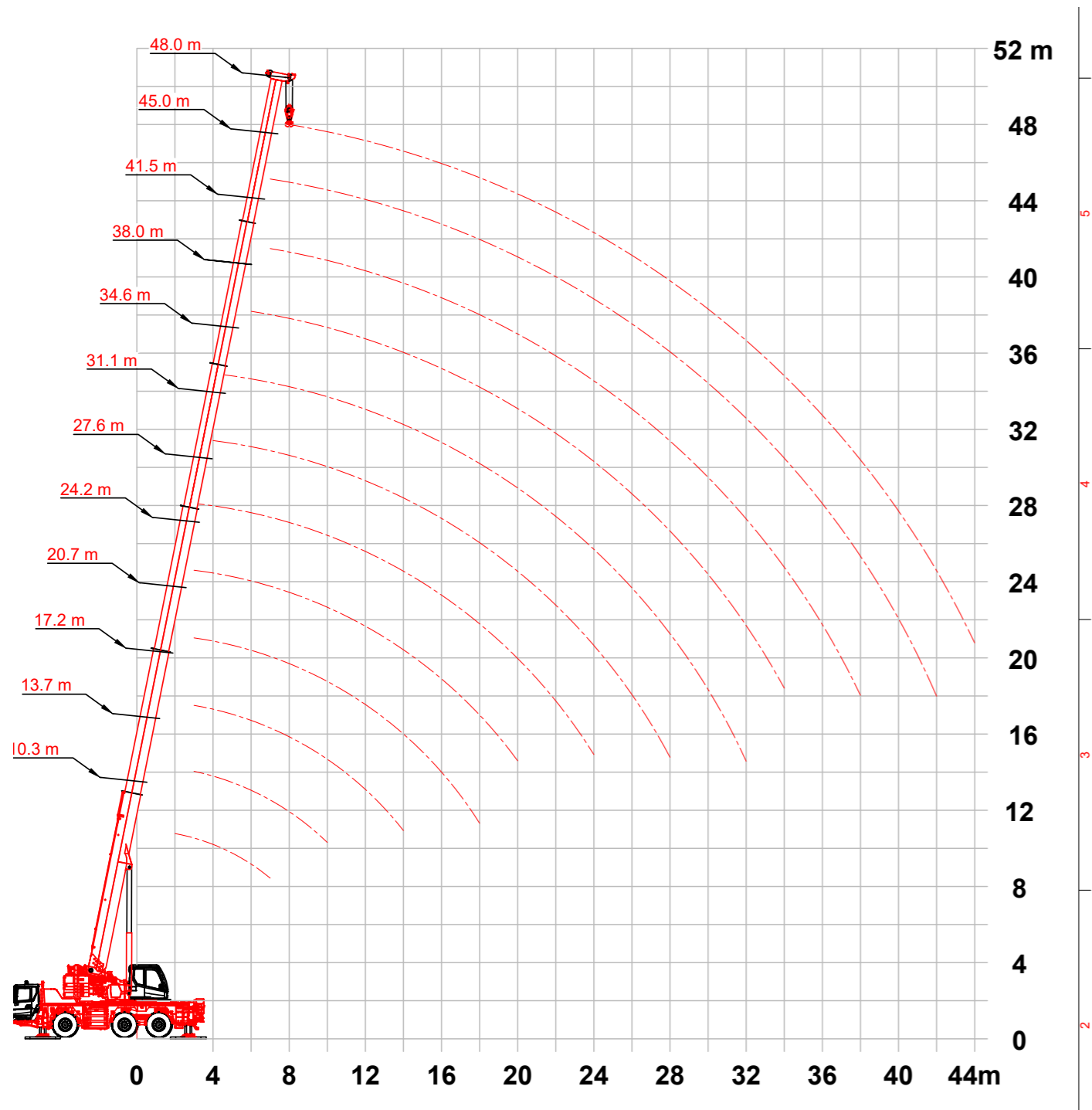
This hybrid crane recharges its batteries while driving and braking. This means that we always arrive at the site with fully charged batteries. There is no need to recharge the batteries during the journey. The operator can get straight to work!

Health and safety

The XCMG XCA60_EV operates with low noise and vibration levels. This means a safer and healthier working environment for the operator and bystanders.

"Thanks to this cooperation with XCMG, we now have crane that complies with all laws and regulations as well as our own as well as our own requirements.

Jan-Ebe Boerema, Regional Manager North Wagenborg Nedliff



Reach (m)	10,3	13,7	17,2	20,7	24,2	27,6	31,1	34,6	38,0	41,5	45,0	48,0	
2,1	60,0												2,1
3,0	42,5	42,5	42,0	35,0	31,0	26,0							3,0
3,5	42,0	42,4	41,3	35,0	30,8	26,0							3,5
4,0	41,2	39,5	38,1	35,0	30,6	26,0	21,8						4,0
4,5	38,1	37,3	35,6	32,9	29,0	25,6	21,6	15,5					4,5
5,0	35,1	34,9	33,7	31,5	27,6	25,5	21,4	15,5					5,0
6,0	29,0	30,7	30,1	28,0	25,0	24,0	20,0	15,5	12,9				6,0
7,0	25,0	27,5	26,9	25,6	22,0	21,5	18,7	15,4	12,9	10,3	8,2		7,0
8,0		23,2	23,5	22,9	20,0	20,2	17,7	14,8	12,6	10,3	8,2	6,8	8,0
9,0		19,8	20,2	19,3	18,0	18,7	15,9	14,0	12,0	10,3	8,2	6,8	9,0
10,0		16,9	17,0	16,9	16,7	17,1	14,3	13,3	11,5	9,8	8,2	6,8	10,0
12,0			13,1	12,8	13,1	12,8	11,8	11,0	10,3	8,7	7,8	6,9	12,0
14,0			10,3	10,4	10,4	10,1	9,9	9,2	8,6	8,0	6,9	6,5	14,0
16,0				8,5	8,4	8,7	8,1	7,6	7,5	7,2	6,3	5,7	16,0
18,0				7,0	6,9	7,3	6,7	6,6	6,4	6,1	5,9	5,4	18,0
20,0					6,2	6,2	5,7	5,7	5,5	5,4	5,0	4,9	20,0
22,0						5,2	5,2	4,8	5,1	4,6	4,4	4,2	22,0
24,0						4,5	4,7	4,2	4,5	4,2	4,1	3,8	24,0
26,0							4,0	3,8	3,9	3,8	3,6	3,5	26,0
28,0							3,5	3,5	3,4	3,3	3,1	3,1	28,0
30,0								3,1	2,9	2,9	2,7	2,7	30,0
32,0								2,7	2,5	2,5	2,3	2,3	32,0
34,0									2,2	2,2	2,0	2,0	34,0
36,0										1,9	1,7	1,7	36,0
38,0										1,6	1,4	1,4	38,0
40,0											1,2	1,2	40,0
42,0											1,0	1,0	42,0
44,0												0,8	44,0

“When you work with this crane, it is quiet. I have also received many compliments from the construction workers about how quiet it is”.

Brian Geerdink, Crane operator Wagenborg Nedlift

WAGENBORG NEDLIFT B.V. (REGIO NOORD)

Groningen, The Netherlands

Delfzijl, The Netherlands

Eemshaven, The Netherlands

Schoonebeek, The Netherlands

Meppel, The Netherlands

WAGENBORG NEDLIFT B.V. (REGIO OOST)

Hengelo, The Netherlands

WAGENBORG NEDLIFT B.V. (REGIO ZUID)

Geleen, The Netherlands

WAGENBORG GMBH

Hörstel-Dreierwalde, Germany