



**EasyMax**

TECHNICAL INFORMATION



# EasyMax - 13.800 DWCC

Multipurpose Open Top, Box Shaped / Single-decker, incl. movable bulkheads.  
Ice Class 1A. Lakes / Grain / CO<sub>2</sub> fitted.

## GENERAL PARTICULARS

Ships	Egbert Wagenborg, Máxima, Amalia
Shipyard	Koninklijke Niestern Sander
Classification	Bureau Veritas
Class notations	I HULL MACH General cargo ship, Heavy cargo (tanktop 150kN/m <sup>2</sup> , tanktop (non-uniformal) 200 kN/m <sup>2</sup> ), Occasional dry bulk cargo, Unrestricted navigation, AUT-UMS, SYS-NEQ-1, ICE
CLASS IA, INWATERSURVEY	
Ice class	Finnish/Swedish 1A
Port of registry	Delfzijl
Flag	Dutch
Year	2017 - 2024

## MAIN PARTICULARS

DWAT	14.366	mt
DWCC summer	13.800	mt
Lenght over all	149,95	m
Breadth over all	15,95	m
Draft summer	8,600	m
Draft in ballast	3,20	m
Air draft in ballast	34,23	m
Depth (moulded)	12,20	m
GT	8.827	
NT	4.475	

## ENGINES

Main engine	Caterpillar MaK 6M32C (Egbert Wagenborg, Máxima) Wärtsilä 6L32 (Amalia)
Propeller	CCP in Nozzle, Ø 4200 mm
Bow thruster	750 kW

## HOLDS & HATCHES

Holds	2 holds, 2 hatches. Fully open hatch, no understow, fully box and double skinned.
Hatches	Coops & Nieborg steel pontoon hatches.

## CARGO CAPACITIES

Hold dimensions	47,36 x 13,50 x 12,15m 64,38 x 13,50 x 12,15m
Total intake	625.000 cbft grain/bale
Hold #1	261.000 cbft grain/bale
Hold #2	364.000 cbft grain/bale

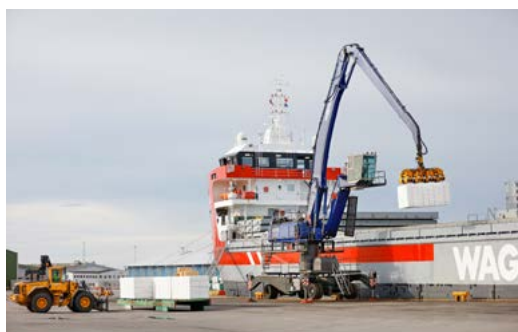
## BULK HEADS

Vessel is equipped with 2 moveable bulkheads, moveable by means of hatch cover gantry crane.

## Strengths

Max pressure tanktop	15,00 mt/m <sup>2</sup>
Max pressure weatherdeck	1,75 mt/m <sup>2</sup>

## Uniform

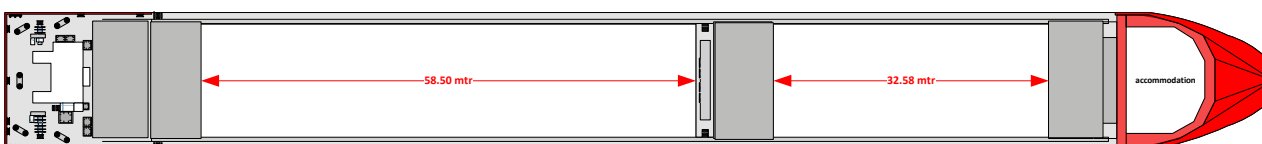
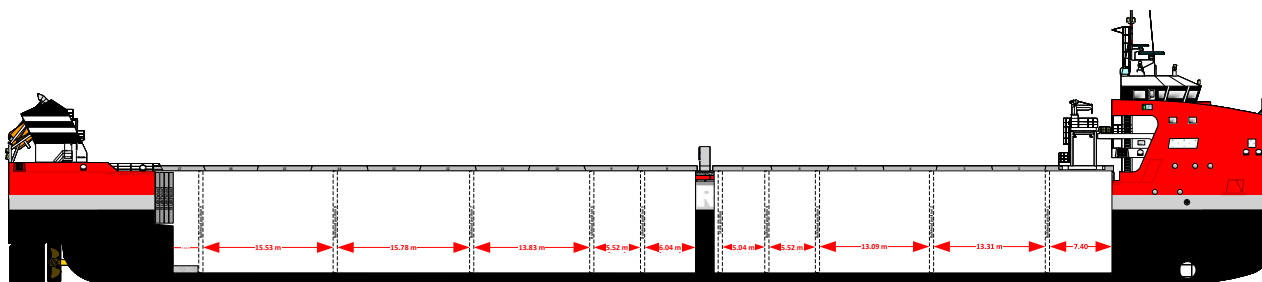
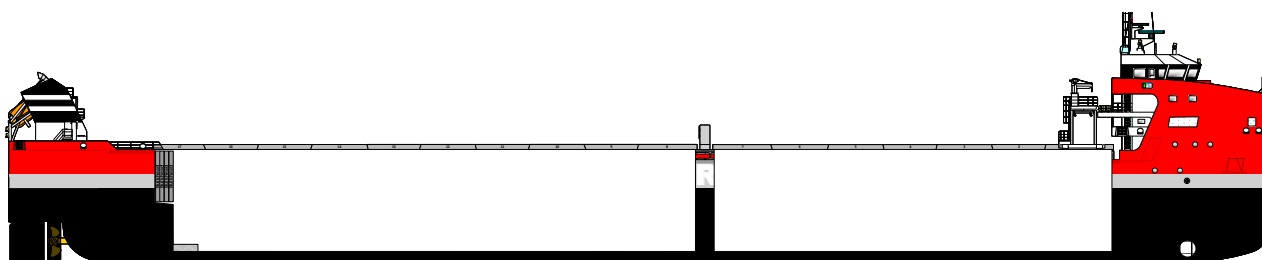
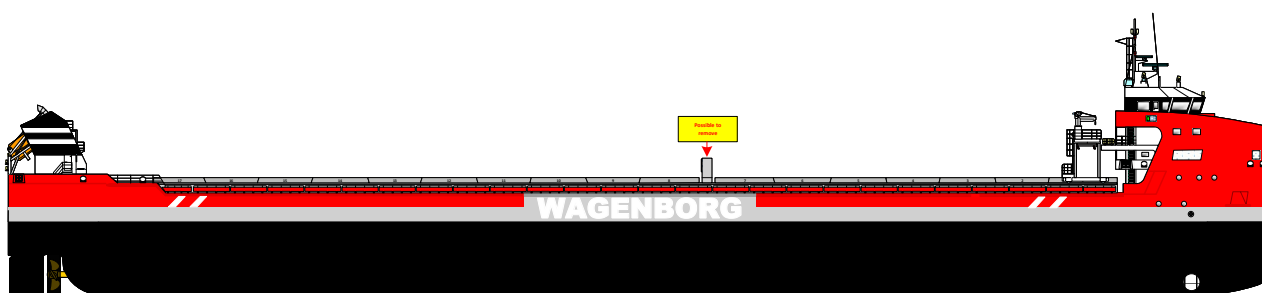
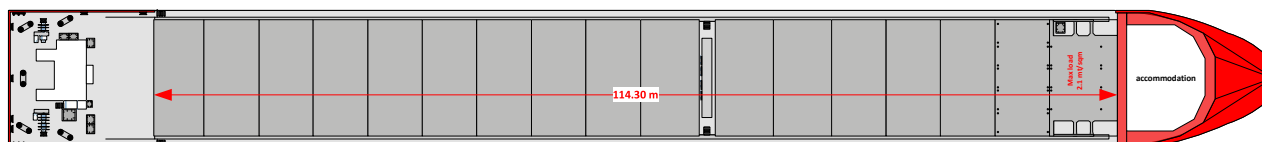
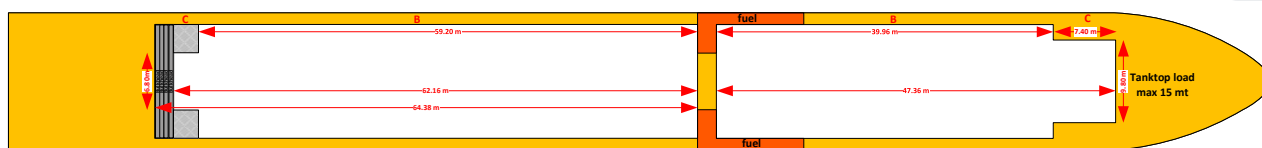


## Wagenborg Shipping

Marktstraat 10, 9934 CK Delfzijl, Netherlands | P.O. Box 14, 9930 AA Delfzijl, Netherlands  
T +31 596 636 911 | E chartering@wagenborg.com | wagenborg.com



# EasyMax - stowage plan



## Wagenborg Shipping

Marktstraat 10, 9934 CK Delfzijl, Netherlands | P.O. Box 14, 9930 AA Delfzijl, Netherlands  
T +31 596 636 911 | E chartering@wagenborg.com | wagenborg.com