



H-class

TECHNICAL INFORMATION



H-class - 5.650 DWCC

Open hatch, fully box, double skinned, Ice Class 1A (incl. 2 movable bulkheads).
Lakes / Grain / CO₂ fitted.

GENERAL PARTICULARS

Ships	Hunteborg
Shipyard	Koninklijke Niestern Sander
Classification	Bureau Veritas
Class notations	I HULL MACH General cargo ship -heavycargo (147 kN/m ²); Container ship Unrestricted navigation AUT-UMS, SYS-NEQ, ICE CLASS IA, MON-SHAFT
Ice class	1A
Port of registry	Delfzijl
Flag	Dutch
Year	2006

MAIN PARTICULARS

DWAT	6.100	mt
DWCC summer	5.650	mt
Lenght over all	113,76	m
Breadth over all	14,40	m
Draft summer	6,020	m
Draft in ballast	4,800	m
Depth (moulded)	8,10	m
GT	4.206	
NT	2.282	

ENGINES

Main engine	Wärtsilä 6L32, 2.999 kW
Bow thruster	350 kW

HOLDS & HATCHES

Holds	2 Holds / 2 Hatches. Fully open hatch, no understow, fully box and double skinned.
Hatches	Steel pontoon hatches

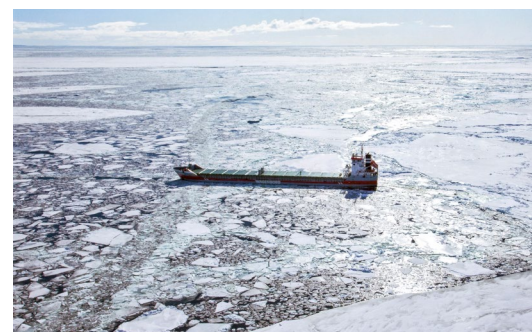
CARGO CAPACITIES

Hold dimensions	38,22 x 11,70 x 8,98m
	44,49 x 11,70 x 8,98m
Total intake	295.779cbft grain/bale
Hold #1	131.865 cbft grain/bale
Hold #2	163.914 cbft grain/bale

BULK HEADS AND TWEEN DECKS

Vessel is equipped with 2 movable bulkheads, movable by means of hatch cover gantry crane.

Strengths	Uniform
Max pressure tanktop	15,00 mt/m ²
Max pressure weatherdeck	1,75 mt/m ²

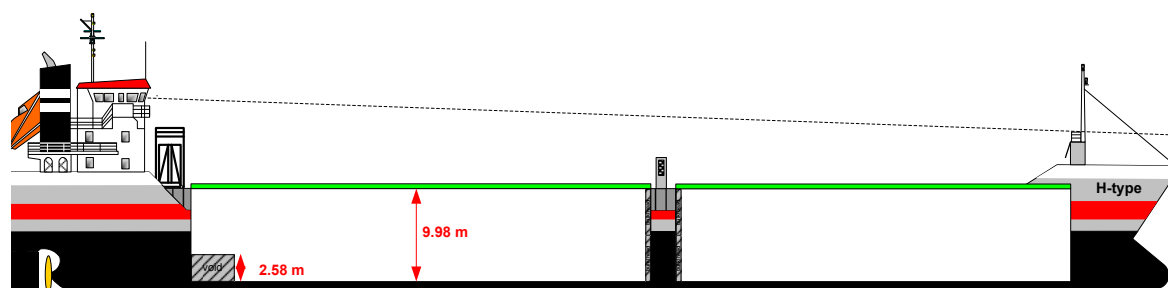
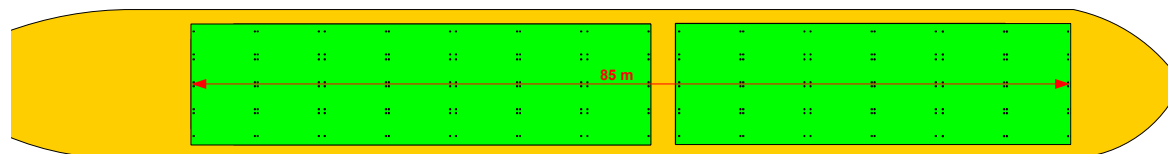
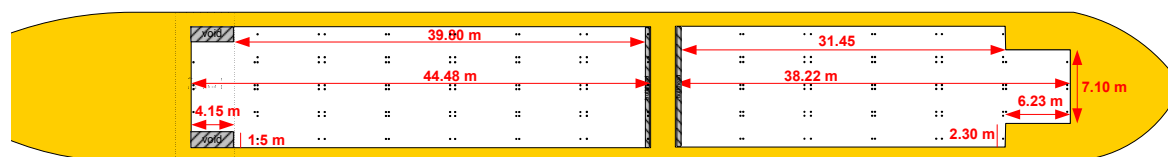


Wagenborg Shipping

Marktstraat 10, 9934 CK Delfzijl, Netherlands | P.O. Box 14, 9930 AA Delfzijl, Netherlands
T +31 596 636 911 | E chartering@wagenborg.com | wagenborg.com



H-class - stowage plan

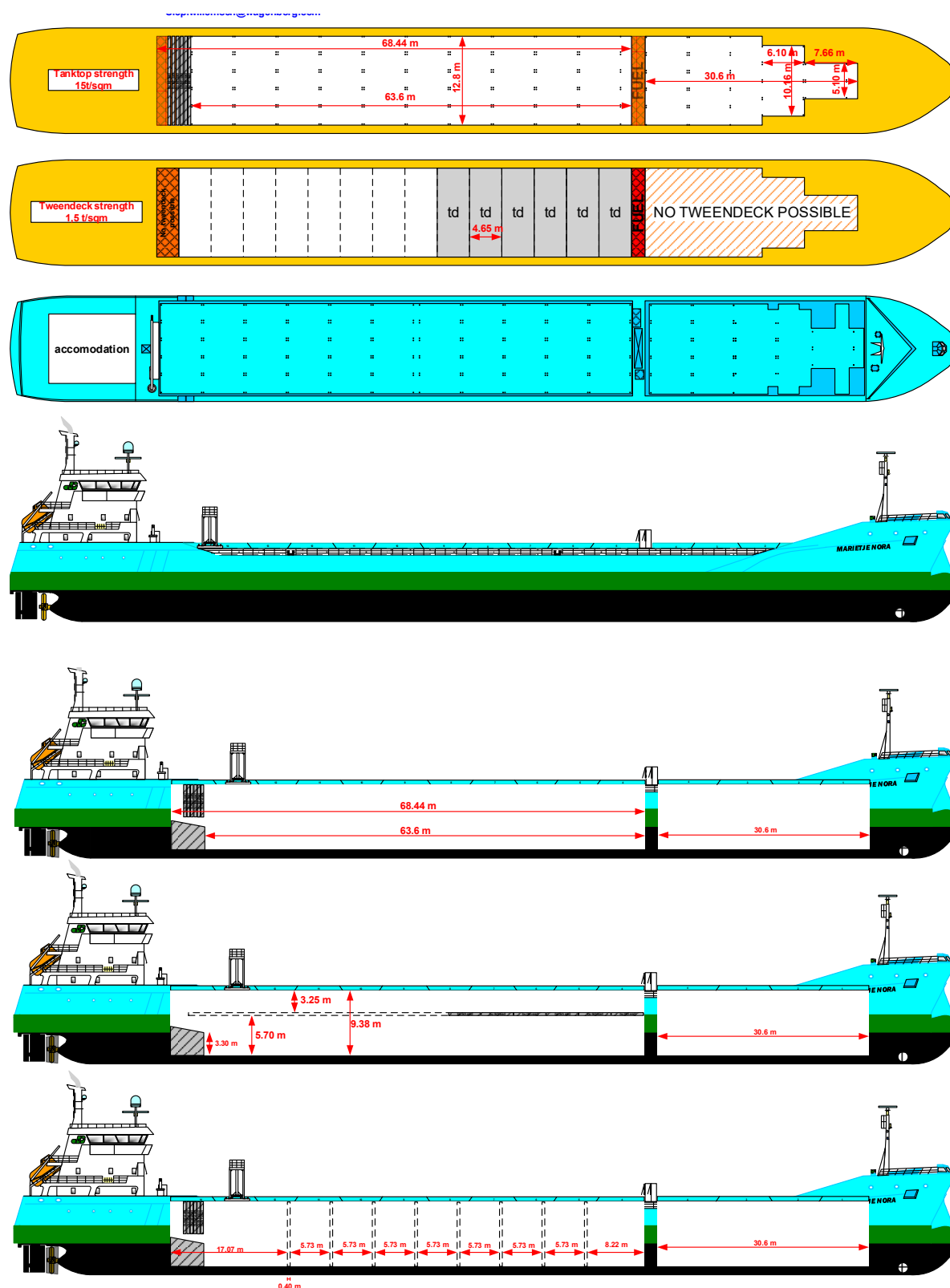


Wagenborg Shipping

Marktstraat 10, 9934 CK Delfzijl, Netherlands | P.O. Box 14, 9930 AA Delfzijl, Netherlands
T +31 596 636 911 | E chartering@wagenborg.com | wagenborg.com



Marietje Nora - stowage plan



Wagenborg Shipping

Marktstraat 10, 9934 CK Delfzijl, Netherlands | P.O. Box 14, 9930 AA Delfzijl, Netherlands
T +31 596 636 911 | E chartering@wagenborg.com | wagenborg.com