



RC-class

TECHNICAL INFORMATION



RC-class - 1.700 TEU

Gearless open top cellular container vessel.

GENERAL PARTICULARS

Ships	Rijnborg
Shipyard	IHC Holland B.V.
Classification	Bureau Veritas
Class notations	I HULL MACH Container ship Unrestricted navigation, AUT-UMS, SYS-NEQ-1, ICE CLASS IA, INWATERSURVEY, LASHING
Ice class	Finnish/Swedish 1A
Port of registry	Delfzijl
Flag	Dutch
Year	2007

MAIN PARTICULARS

DWAT	15.578	mt
DWCC summer	19.825	mt
Length over all	176,00	m
Breadth over all	23,70	m
Draft summer	7,700	m
Draft in ballast	5,400	m
Depth (moulded)	10,85	m
GT	16.506	
NT	8.804	

ENGINES

Main engine	2 x Wärtsilä W6L46F, 7.500 kW
Bow thruster	880 kW

CONTAINER INTAKE

1.700 TEU nominal	
1.244 units 20'+ 224 units 40'	total intake 1.692 units 20'
839 units 40'+ 22 units 20'	total intake 1.700 units 20'

Vessel is also able to load 136 units of 45' on deck above cell guides.

Homogeneous intakes (stability according to IMO regulations)

12 mts :	1.200 TEU
14 mts :	1.050 TEU
16 mts :	950 TEU
18 mts :	820 TEU

Above calculated on 50% bunkers, max draft and minimum MG, all within max stockload.

Homogeneous intakes (stability according IMO regulations)

12 mts :	1.170 TEU
14 mts :	1.000 TEU
16 mts :	880 TEU
18 mts :	775 TEU

Above calculated on 100% bunkers, max draft and minimum MG, all within max stockload.

Container intake is always subject to vessel's trim/stability and permissible stack weights.

FITTINGS

Vessel fitted with 40' cell guides in holds and on aft deck, able to take 2 x 20' unit into each 40' cell position. Furthermore fitted with twist locks to secure containers which are loaded on top of units stowed in fully supported bays.

200 pieces of reefer plugs for 40' containers fitted against the skeletal bulkheads in hold 2 and 3.

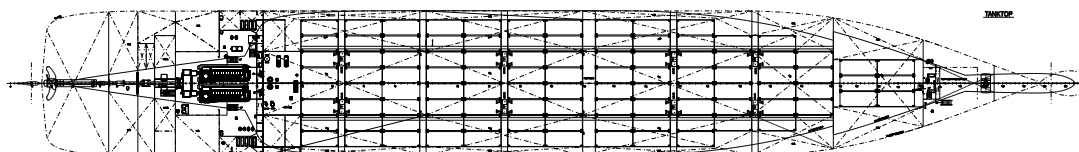
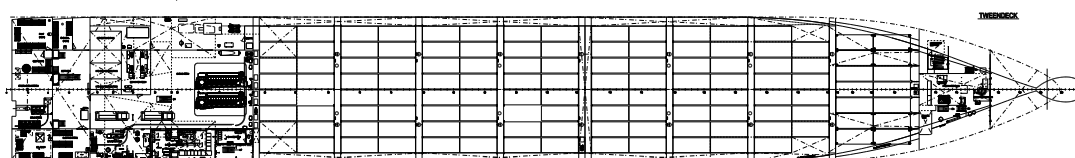
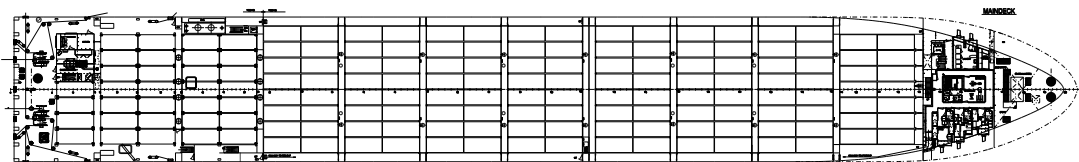
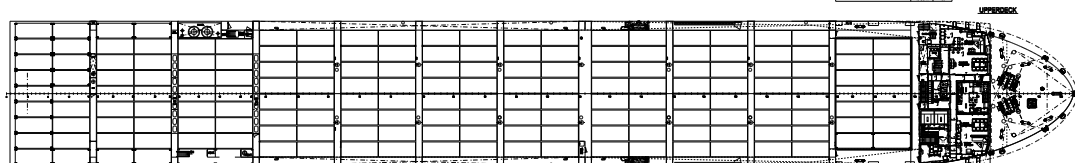
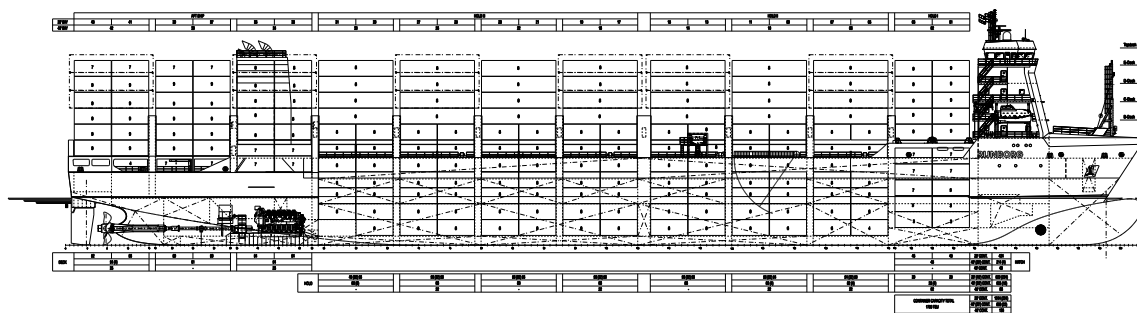


Wagenborg Shipping

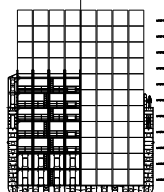
Marktstraat 10, 9934 CK Delfzijl, Netherlands | P.O. Box 14, 9930 AA Delfzijl, Netherlands
T +31 596 636 911 | E chartering@wagenborg.com | wagenborg.com



RC-class - stowage plan



MAIN DECK HOLD



Wagenborg Shipping

Marktstraat 10, 9934 CK Delfzijl, Netherlands | P.O. Box 14, 9930 AA Delfzijl, Netherlands
T +31 596 636 911 | E chartering@wagenborg.com | wagenborg.com