



W-class

TECHNICAL INFORMATION



W-class - 9.050 DWCC

Geared, Singledecker /Bulkcarrier - Double skinned, boxed, steel floored, fully P&I covered, bowthruster fitted, Great Lakes fitted. Vessel is CO₂ fitted in all cargo holds.

GENERAL PARTICULARS

Ships	Waalborg, Warnowborg, Weserborg, Wislaborg
Shipyard	Nanjing Huatai Shipyard
Classification	Bureau Veritas
Class notations	I HULL MACH General cargo ship -heavycargo (137 kN/m ²) -equipped for carriage of containers; -heavycargo Unrestricted navigation AUT-UMS, ICE CLASS IA, INWATERSURVEY
Ice class	Finnish/Swedish 1A
Port of registry	Delfzijl
Flag	Dutch
Year	2010 - 2011

MAIN PARTICULARS

DWAT	9.661	mt
DWCC summer	9.050	mt
Lenght over all	106,98	m
Breadth over all	18,20	m
Draft summer	8,227	m
Draft in ballast	4,500	m
Depth (moulded)	10,50	m
GT	6.668	
NT	3.625	

ENGINES

Main engine	Caterpillar MaK 8M32C, 3.840 kW
Bow thruster	450 kW

HOLDS & HATCHES

Holds	3 Holds / 3 Hatches. Fully open hatch, no understow, fully box and double skinned.
Hatches	Hydraulic folding hatches

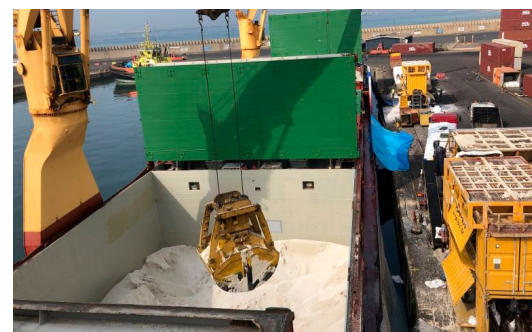
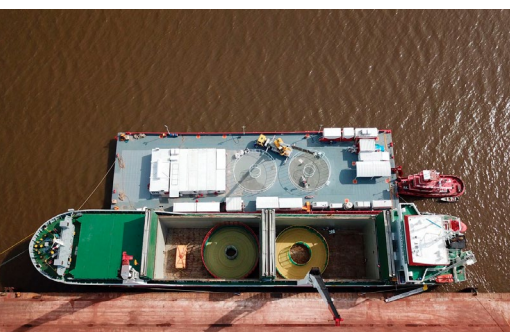
CARGO CAPACITIES

Hold dimensions	16,10 x 15,20 x 13,10m 25,90 x 15,20 x 11,50m 25,90 x 15,20 x 11,50m
Total intake	427.944cbft grain/bale
Hold #1	105.510 cbft grain/bale
Hold #2	161.217 cbft grain/bale
Hold #3	161.217 cbft grain/bale

Max pressure tanktop 14,00 mt/m²

CARGO CRANES

- 2 cranes fixed on portside with:
 - a capacity of 60 mts @16m or 40 mts @28m
 - a combined capacity of 120 mts

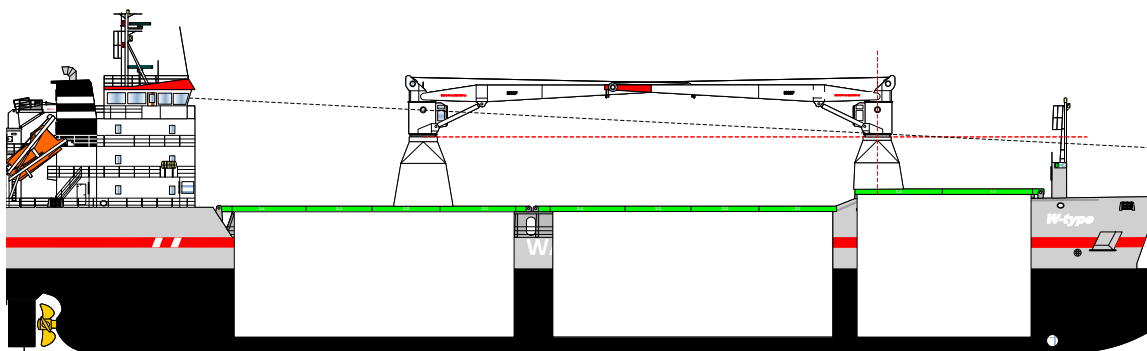
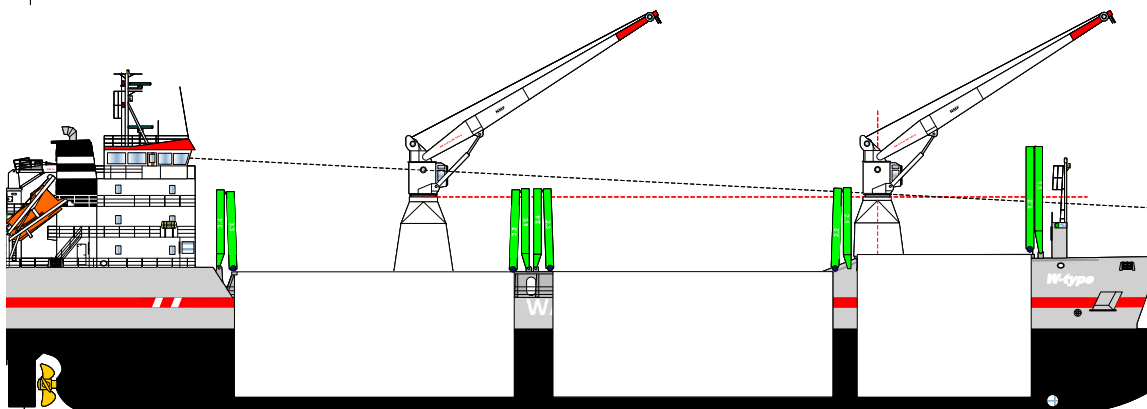
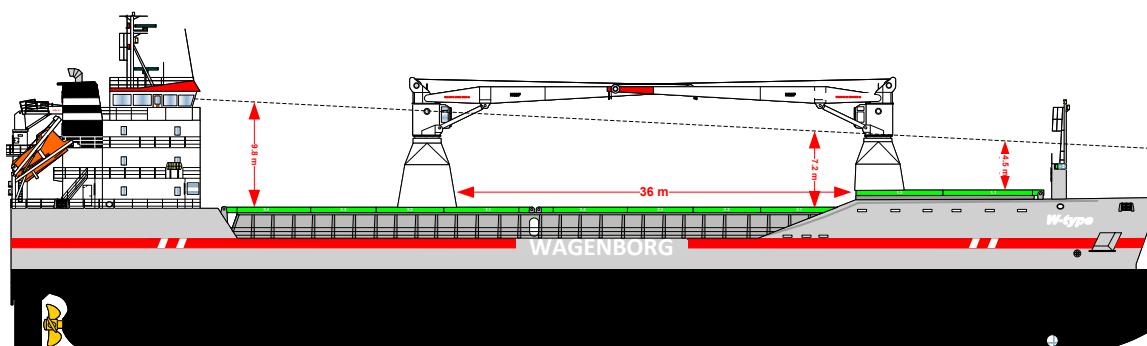
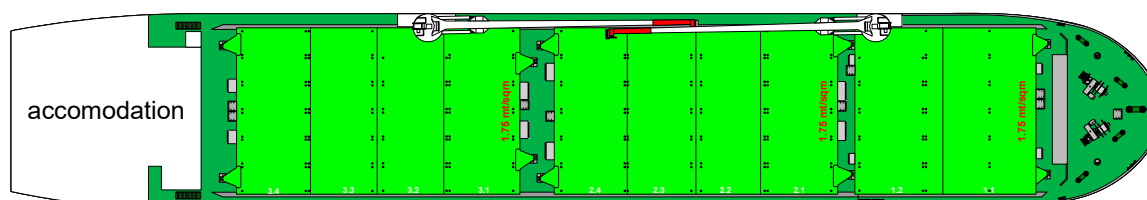
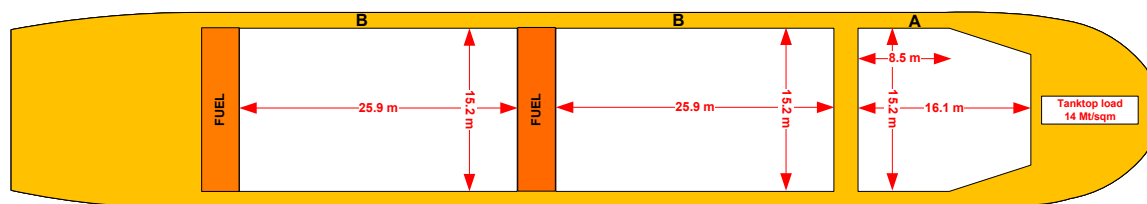


Wagenborg Shipping

Marktstraat 10, 9934 CK Delfzijl, Netherlands | P.O. Box 14, 9930 AA Delfzijl, Netherlands
T +31 596 636 911 | E chartering@wagenborg.com | wagenborg.com



W-class - stowage plan



Wagenborg Shipping

Marktstraat 10, 9934 CK Delfzijl, Netherlands | P.O. Box 14, 9930 AA Delfzijl, Netherlands
T +31 596 636 911 | E chartering@wagenborg.com | wagenborg.com