



R-class

TECHNICAL INFORMATION



R-class - 22.000 DWCC

Box shaped, single-decker incl. 2 movable bulkheads, Ice Class 1A. Lakes / Grain / CO₂ fitted.

GENERAL PARTICULARS

Ships	Reestborg, Reggeborg, Roerborg
Shipyard	Ferus Smit Leer GmbH
Classification	Bureau Veritas
Class notations	I + HULL + MACH General cargo ship Container ship Unrestricted navigation +AUT-UMS, +SYS-NEQ, ICE CLASS IA, INWATERSURVEY
Ice class	Finnish/Swedish 1A
Port of registry	Delfzijl
Flag	Dutch
Year	2013 - 2014

MAIN PARTICULARS

DWAT	23.000	mt
DWCC summer	22.000	mt
Length over all	169,75	m
Breadth over all	20,40	m
Draft summer	9,718	m
Draft in ballast	6,00	m
TPC SSW	32,50	mt/cm
Air draft in ballast	32,42	m
Depth (moulded)	13,75	m
GT	14.141	
NT	6.853	

ENGINES

Main engine	Wärtsilä 9L32C, 4.500 kW
Reduction gear	Flender (Siemens) GUCP 1120
Propeller	Single CCP, 4 blade with nozzle, 47500mm, 110 rpm
Bow thruster	650 kW

HOLDS & HATCHES

Holds	2 Holds / 2 Hatches. Fully open hatch, no understow, fully box and double skinned.
Hatches	Coops & Nieborg steel pontoon hatches.

CARGO CAPACITIES

Hold dimensions	60,59 x 17,00 x 13,55m
	60,59 x 17,00 x 13,55m
Total intake	945.000 cbft grain/bale (tweendeck in hold)
Hold #1	457.000 cbft grain/bale
Hold #2	488.000 cbft grain/bale

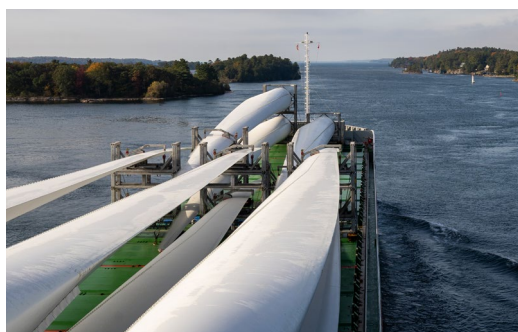
BULK HEADS

Vessel is equipped with 2 moveable bulkheads, moveable by means of hatch cover gantry crane.

Strengths

Max pressure tanktop	15,00 mt/m ²
Max pressure weatherdeck	1,75 mt/m ²

Uniform

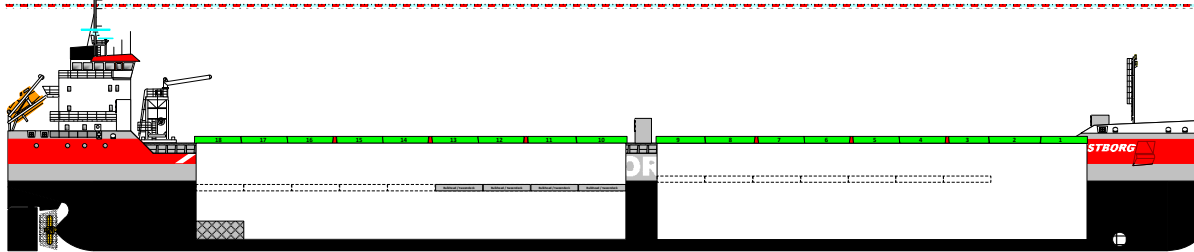
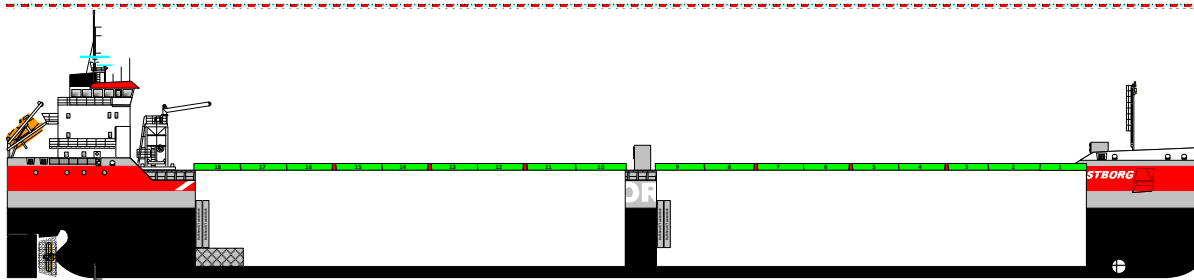
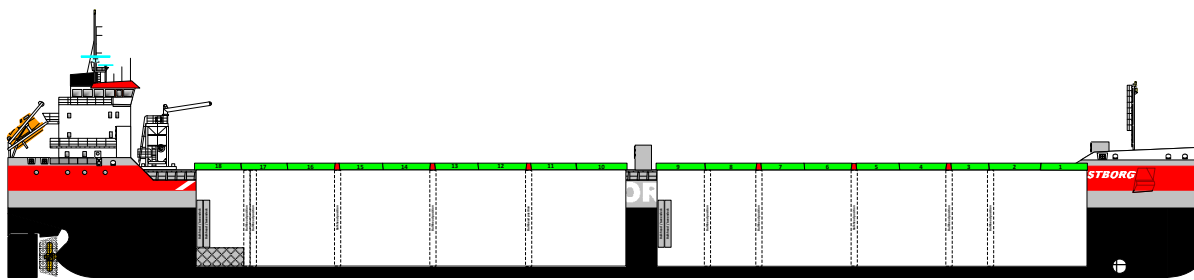
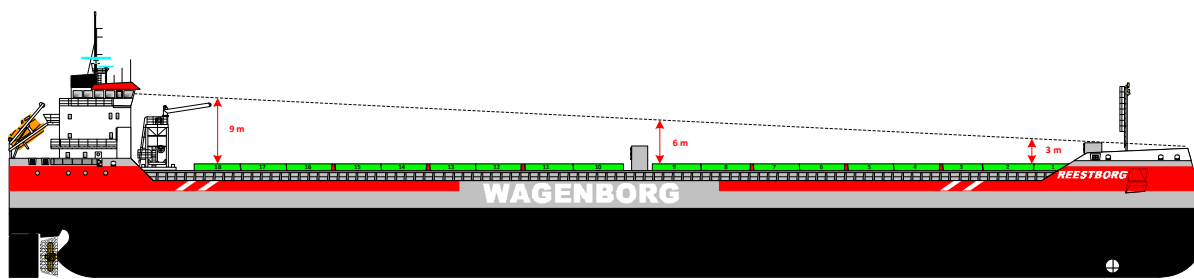
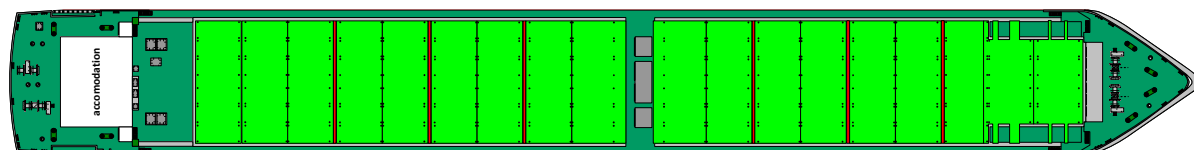
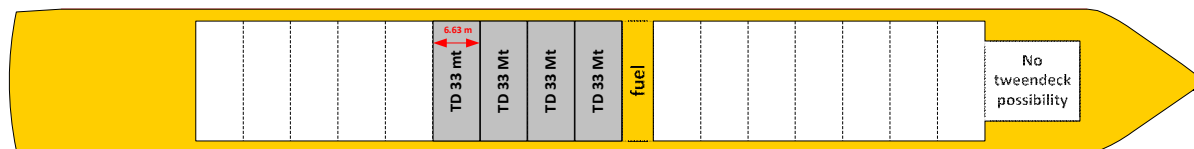
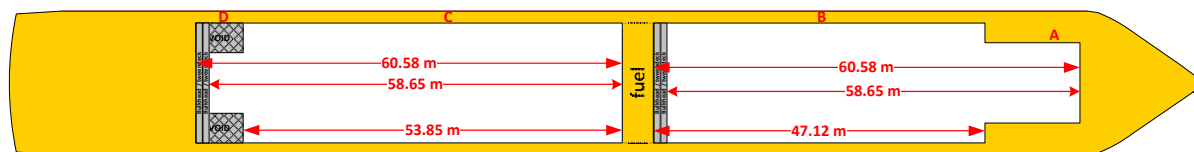


Wagenborg Shipping

Marktstraat 10, 9934 CK Delfzijl, Netherlands | P.O. Box 14, 9930 AA Delfzijl, Netherlands
T +31 596 636 911 | E chartering@wagenborg.com | wagenborg.com



R-class - stowage plan



Wagenborg Shipping

Marktstraat 10, 9934 CK Delfzijl, Netherlands | P.O. Box 14, 9930 AA Delfzijl, Netherlands
T +31 596 636 911 | E chartering@wagenborg.com | wagenborg.com