



660 DWT pontoon

TECHNICAL INFORMATION



660 DWT pontoon

GENERAL PARTICULARS

Pontoons	Wagenborg Barge 3
Owner	Wagenborg Towage
Type	Pontoon, Inland & Harbour, ballastible, deck cargo
Classification	Pontoon
Port of Registry	Delfzijl, The Netherlands
ENI	02321997
Flag	Dutch
Built	1994

MAIN DIMENSIONS

LOA	45m
BOA	9.50m
Depth (mld.)	2.60 m
Deck area (~)	400m ²
Draught (mld.)	2.03m

TONNAGE

Lightweight	212t
Deadweight	660t
Deck load (uniform)	10 t/m ²

MOORING ARRANGEMENT

Bollards	9 x double bollard
Mooring	4 x mooring wire
Spudholes	2 x spudholes ø458mm

TOWING ARRANGEMENT

2x towing brackets

ANCHOR SYSTEM

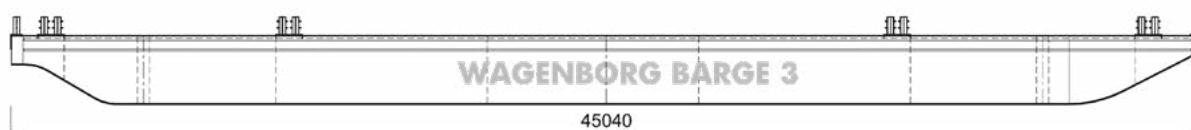
Anchor Anchor + manual winch

BALLAST SYSTEM

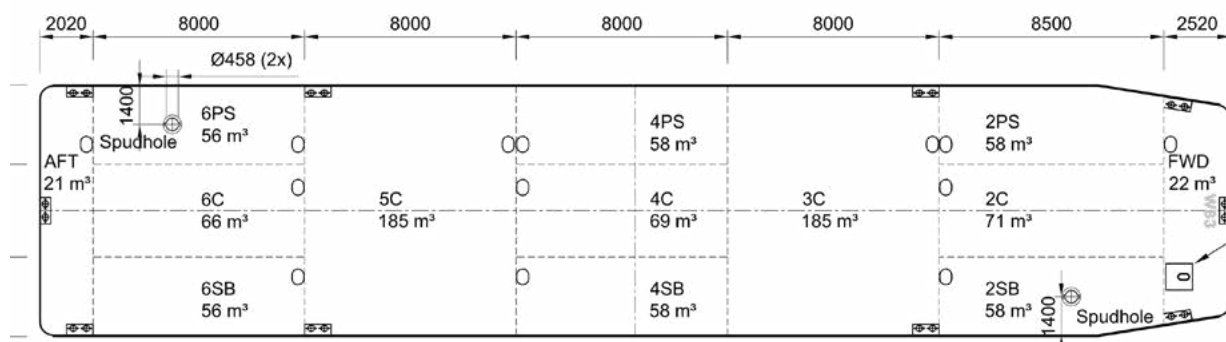
Pump External ballast pumps applicable.

EXTRA

Spud legs 2x spud legs applicable incl. winch



STRUCTURAL LAYOUT



Wagenborg Towage

Marktstraat 10, 9934 CK Delfzijl, Netherlands | P.O. Box 14, 9930 AA Delfzijl, Netherlands
T +31 596 636 911 | E towage@wagenborg.com | wagenborg.com