



Peters 2800-class

TECHNICAL INFORMATION



Peters 2800 class - 2.800 DWCC

Single-decker - MPP - Open hatch, fully box, double skinned, incl 2 movable bulkheads.
Peters Combi Porter 150 type. NAABSA fitted.

GENERAL PARTICULARS

Ships	Jalonborg, Jekerborg, Jonaborg, Westewind
Shipyard	Scheepswerf Peters B.V.
Classification	Bureau Veritas
Class notations	I HULL MACH General cargo ship -heavycargo (150 kN/m ² on tank top) Unrestricted navigation ICE CLASS ID, STRENGTHBOTTOM
Ice class	1D
Port of registry	Delfzijl
Flag	Dutch
Year	2000 - 2004

MAIN PARTICULARS

DWAT	2.935	mt
DWCC summer	2.800	mt
Length over all	88,98	m
Breadth over all	12,40	m
Draft summer	4,350	m
Draft in ballast	2,600	m
Depth (moulded)	5,65	m
GT	2.080	
NT	1.168	

ENGINES

Main engine	Wärtsilä 8L20, 1.320kW
Bow thruster	280 kW

HOLDS & HATCHES

Holds	1 Hold / 1 Hatch. Fully open hatch, no understow, fully box and double skinned.
Hatches	Steel pontoon hatches

CARGO CAPACITIES

Hold dimensions	62,40 x 10,24 x 6,70m
Total intake	151.000 cbft grain/bale

BULK HEADS AND TWEEN DECKS

Vessel is equipped with 2 movable bulkheads, movable by means of hatch cover gantry crane.

Strengths	Uniform
Max pressure tanktop	15,00 mt/m ²
Max pressure weatherdeck	1,60 mt/m ²

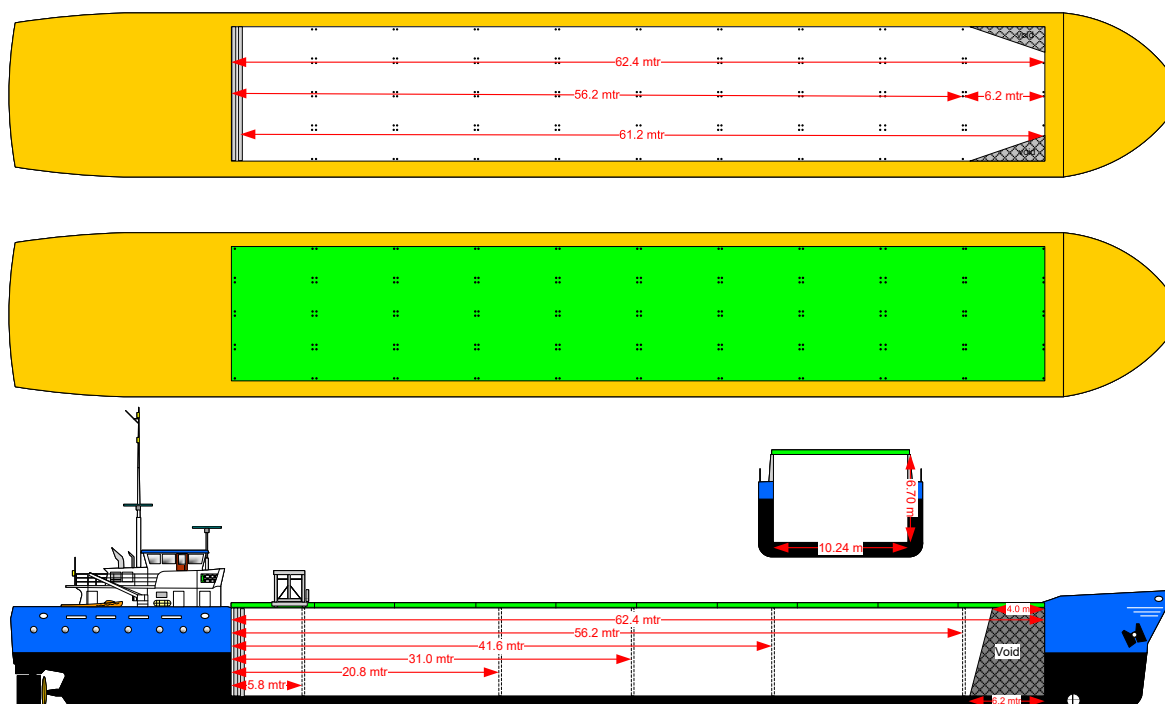


Wagenborg Shipping

Marktstraat 10, 9934 CK Delfzijl, Netherlands | P.O. Box 14, 9930 AA Delfzijl, Netherlands
T +31 596 636 911 | E chartering@wagenborg.com | wagenborg.com



Peters 2.800 - stowage plan

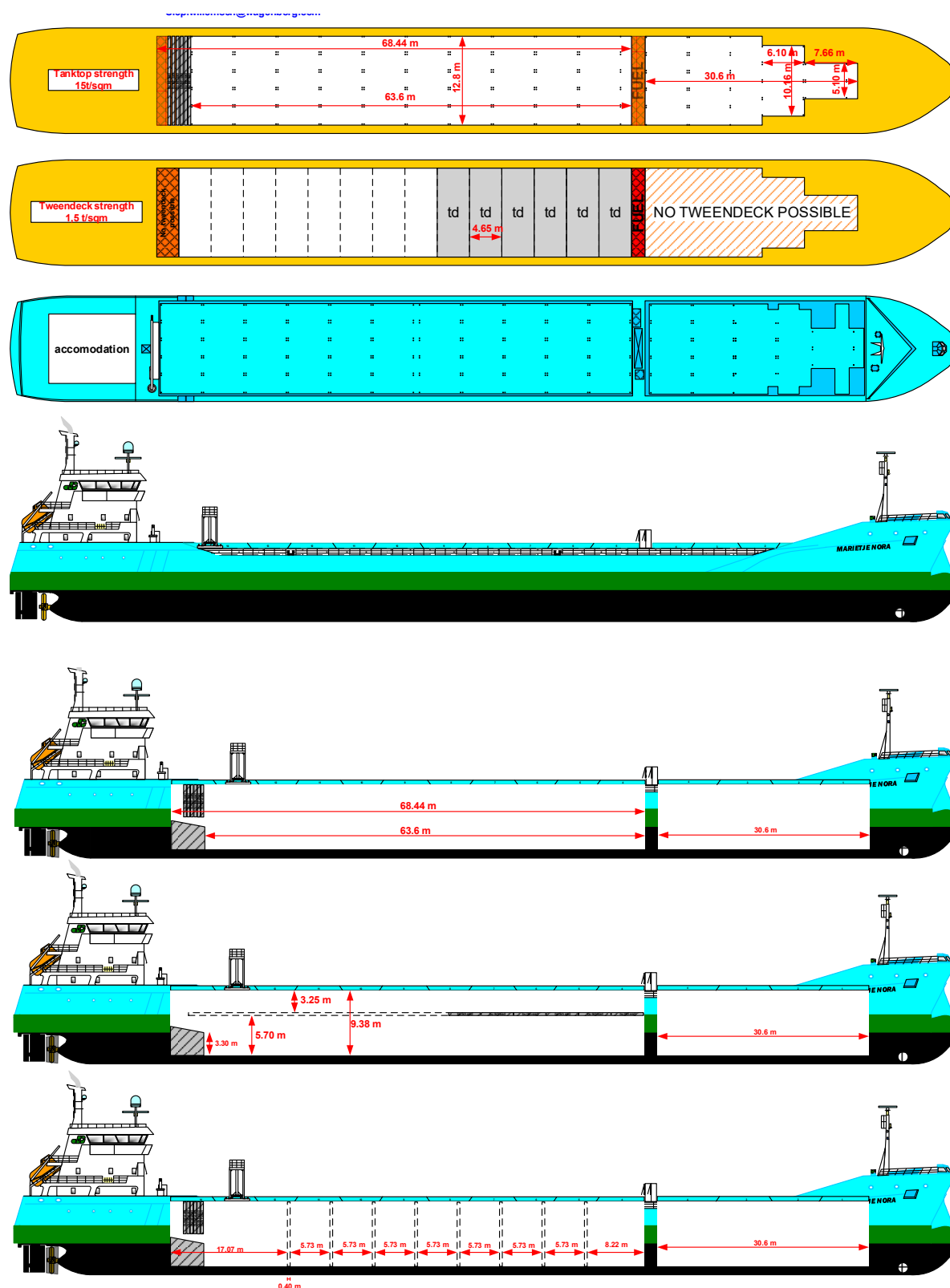


Wagenborg Shipping

Marktstraat 10, 9934 CK Delfzijl, Netherlands | P.O. Box 14, 9930 AA Delfzijl, Netherlands
T +31 596 636 911 | E chartering@wagenborg.com | wagenborg.com



Marietje Nora - stowage plan



Wagenborg Shipping

Marktstraat 10, 9934 CK Delfzijl, Netherlands | P.O. Box 14, 9930 AA Delfzijl, Netherlands
T +31 596 636 911 | E chartering@wagenborg.com | wagenborg.com