



M-class

TECHNICAL INFORMATION



M-class - 8.900 DWCC

Single-decker - MPP - Ice Class 1A. Open hatch fully box, double skinned, incl 2 movable bulkheads. Lakes / Grain / CO₂ fitted.

GENERAL PARTICULARS

Ships	Medemborg, Merweborg, Mississippiborg, Missouriborg, Moezelborg
Shipyard	Veka Shipyard Lemmer
Classification	Bureau Veritas
Class notations	I HULL MACH General cargo ship; Container ship Heavy Cargo Unrestricted navigation AUT-UMS, SYS-NEQ-1, MON-SHAFT, ICE CLASS IA
Ice class	Finnish/Swedish 1A
Port of registry	Delfzijl
Flag	Dutch
Year 1	1997 - 2000

HOLDS & HATCHES

Holds	2 Holds / 2 Hatches. Fully open hatch, no understow, fully box and double skinned.
Hatches	Steel pontoon hatches

CARGO CAPACITIES

Hold dimensions	39,20 x 13,50 x 10,86m
	52,50 x 13,50 x 10,86m
Total intake	450.000 cbft grain/bale
Hold #1	190.000 cbft grain/bale
Hold #2	260.000 cbft grain/bale

MAIN PARTICULARS

DWAT	9.732	mt
DWCC summer	8.900	mt
Length over all	134,55	m
Breadth over all	16,50	m
Draft summer	7,40	m
Draft in ballast	4,38	m
Depth (moulded)	9,80	m
GT	6.540	
NT	3.686	

BULK HEADS AND TWEEN DECKS

Vessel is equipped with 2 moveable bulkheads, moveable by means of hatch cover gantry crane.

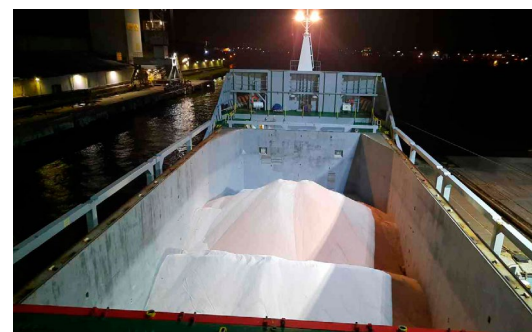
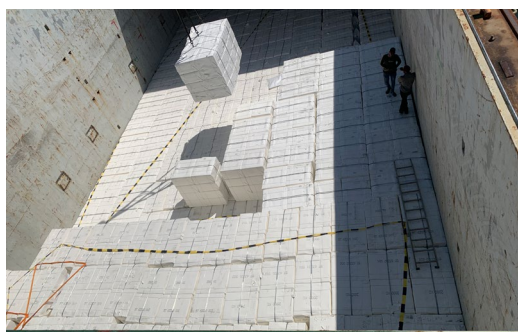
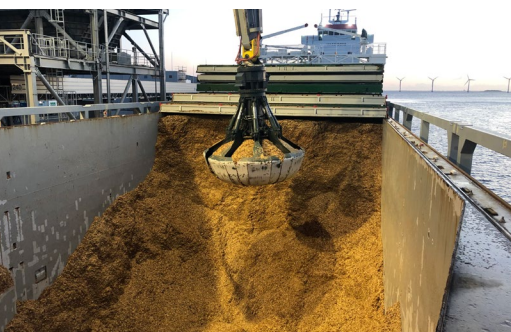
Strengths

Max pressure tanktop	15,00 mt/m ²
Max pressure weatherdeck	1,75 mt/m ²

Uniform

ENGINES

Main engine	Wärtsilä 8L38, 5.280 kW
Bow thruster	600 kW

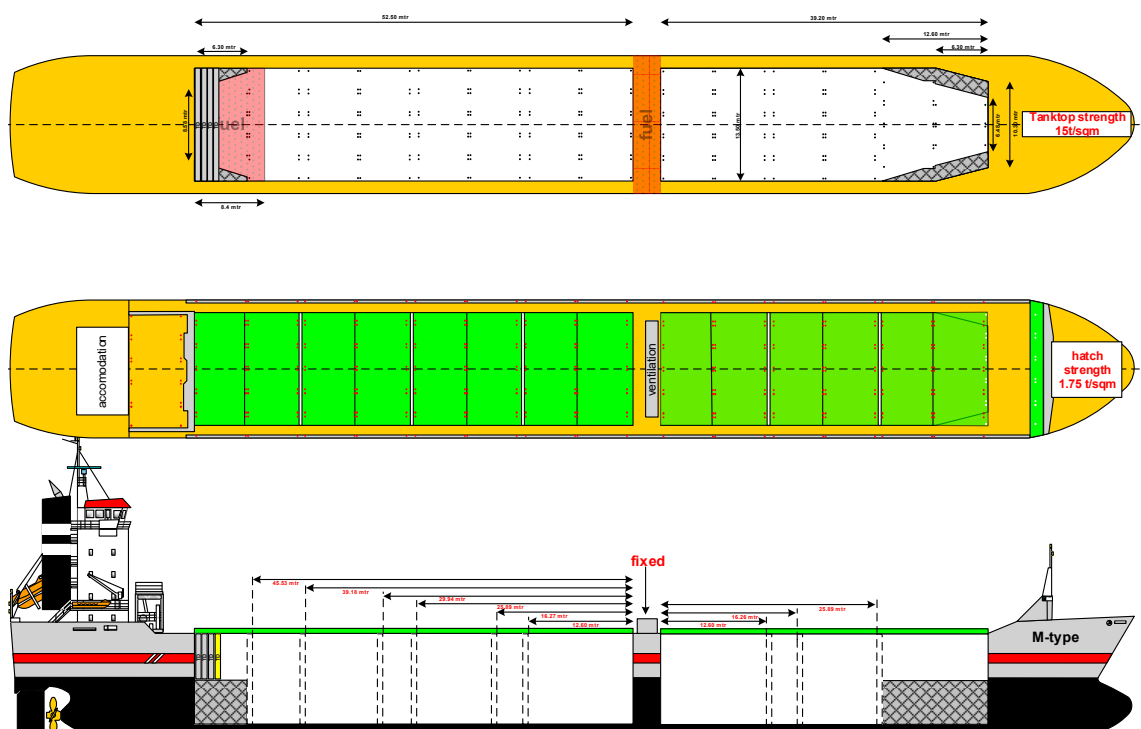


Wagenborg Shipping

Marktstraat 10, 9934 CK Delfzijl, Netherlands | P.O. Box 14, 9930 AA Delfzijl, Netherlands
T +31 596 636 911 | E chartering@wagenborg.com | wagenborg.com



M-class - stowage plan



Wagenborg Shipping

Marktstraat 10, 9934 CK Delfzijl, Netherlands | P.O. Box 14, 9930 AA Delfzijl, Netherlands
T +31 596 636 911 | E chartering@wagenborg.com | wagenborg.com