



Bijlsma trader

TECHNICAL INFORMATION



Bijlsma trader - 4.250 DWCC

Single-decker - MPP - Ice Class 1A. Open hatch, fully box and double skinned.
Lakes/ Grain/ CO₂ fitted.

GENERAL PARTICULARS

Ships	Cederborg, Sagasbank, Stroombank
Shipyard	Veka Shipyard Lemmer
Classification	Bureau Veritas
Class notations	I HULL MACH General cargo ship Container ship heavy cargo - 147 kN/m ² Unrestricted navigation AUT-UMS, STRENGTHBOTTOM, INWATERSURVEY
Ice class	-
Port of registry	Delfzijl
Flag	Dutch
Year	2009 - 2011

MAIN PARTICULARS

DWAT	4.541	mt
DWCC summer	4.250	mt
Lenght over all	89,95	m
Breadth over all	14,40	m
Draft summer	5,830	m
Draft in ballast	4,100	m
Depth (moulded)	7,35	m
GT	2.999	
NT	1.662	

ENGINES

Main engine	Wärtsilä 6L26A, 1.860 kW
Bow thruster	250 kW

HOLDS & HATCHES

Holds	1 Hold / 1 Hatch. Fully open hatch, no understow, fully box and double skinned. Vessel is equipped with 4 cement holes.
Hatches	Steel pontoon hatches

CARGO CAPACITIES

Hold dimensions	63,00 x 11,60 x 8,35m
Total intake	214.000 cbft grain/bale

BULK HEADS AND TWEEN DECKS

Vessel is equipped with 2 movable bulkheads, movable by means of hatch cover gantry crane.

Strengths

Max pressure tanktop	15,00 mt/m ²
Max pressure weatherdeck	1,60 mt/m ²

Uniform

Max pressure tanktop	15,00 mt/m ²
Max pressure weatherdeck	1,60 mt/m ²

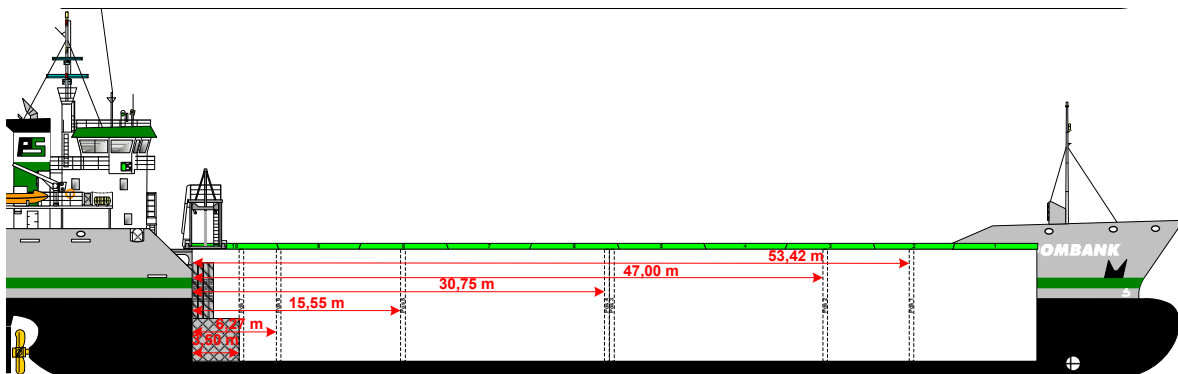
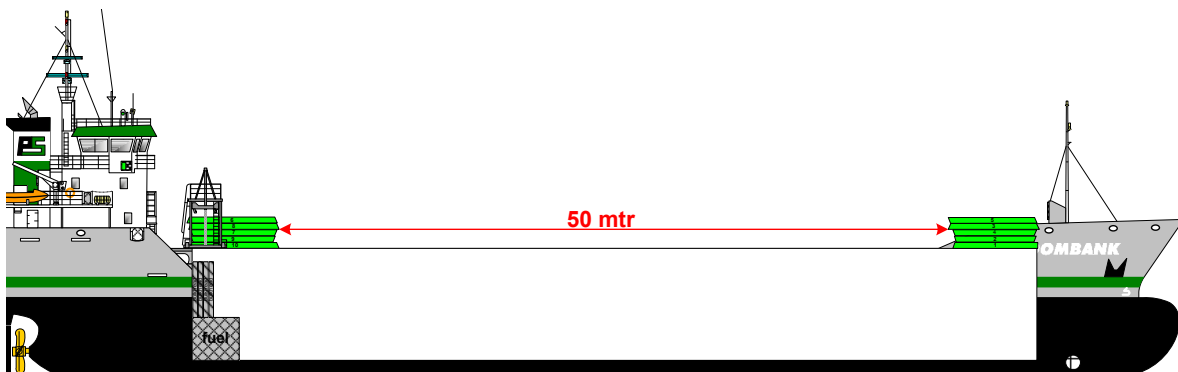
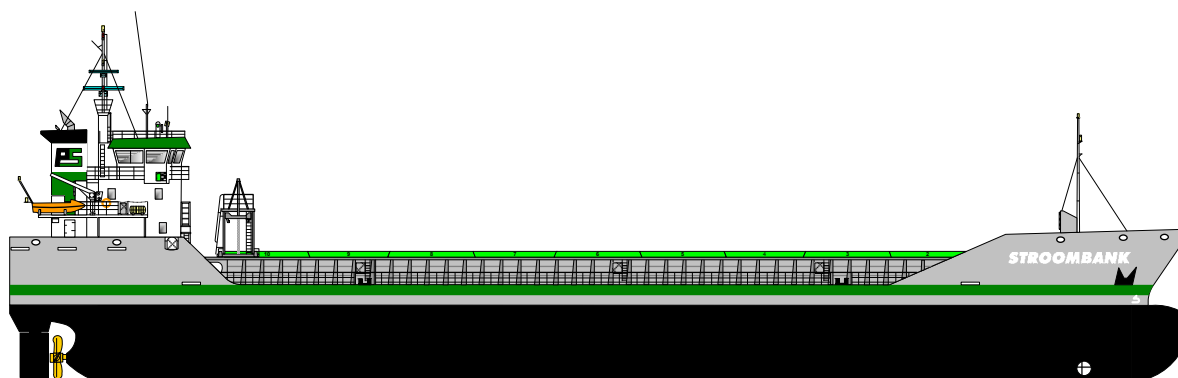
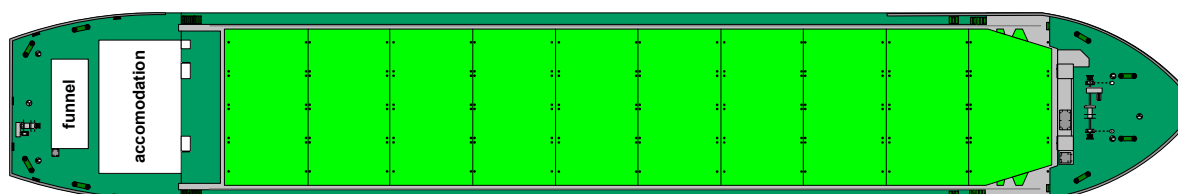


Wagenborg Shipping

Marktstraat 10, 9934 CK Delfzijl, Netherlands | P.O. Box 14, 9930 AA Delfzijl, Netherlands
T +31 596 636 911 | E chartering@wagenborg.com | wagenborg.com



Bijlsma trader - stowage plan



Wagenborg Shipping

Marktstraat 10, 9934 CK Delfzijl, Netherlands | P.O. Box 14, 9930 AA Delfzijl, Netherlands
T +31 596 636 911 | E chartering@wagenborg.com | wagenborg.com