



# Icerunner-class

TECHNICAL INFORMATION





# Icerunner-class - 3.350 DWCC

Multipurpose Single-decker, open hatch, fully box, double skinned. Ice Runner, Ice Class 1A

## GENERAL PARTICULARS

Ships	Ankie, Heyn, Jolyn, Leonie, Mila, Oderborg, Ohioborg, Robijn, Ruyter, Speyk
Shipyard	Scheepswerf Peters B.V
Classification	Rina International
Class notations	C general cargo ship - double side-skin - equipped for carriage of containers - heavycargo - nonhomload ; unrestricted navigation, AUT-UMS; ICE CLASS 1A; STRENGTHBOTTOM.
Ice class	1A
Port of registry	Delfzijl
Flag	Dutch
Year	2006 - 2008

## MAIN PARTICULARS

DWAT	3.642	mt
DWCC summer	3.350	mt
Lenght over all	89,99	m
Breadth over all	12,50	m
Draft summer	5,310	m
Draft in ballast	3,500	m
Depth (moulded)	8,07	m
GT	2.528	
NT	1.053	

## ENGINES

Main engine	Wärtislä 9L20, 1.800 kW
Bow thruster	220 kW

## HOLDS & HATCHES

Holds	1 Hold / 1 Hatch. Fully open hatch, no understow, fully box and double skinned.
Hatches	Steel pontoon hatches

## CARGO CAPACITIES

Hold dimensions	60,00 x 10,30 x 8,15m
Total intake	174.000 cbft grain/bale

## BULK HEADS AND TWEEN DECKS

Vessel is equipped with 2 movable bulkheads, movable by means of hatch cover gantry crane.

## Strengths

Max pressure tanktop	15,00 mt/m <sup>2</sup>
Max pressure weatherdeck	1,60 mt/m <sup>2</sup>

## Uniform

Max pressure tanktop	15,00 mt/m <sup>2</sup>
Max pressure weatherdeck	1,60 mt/m <sup>2</sup>

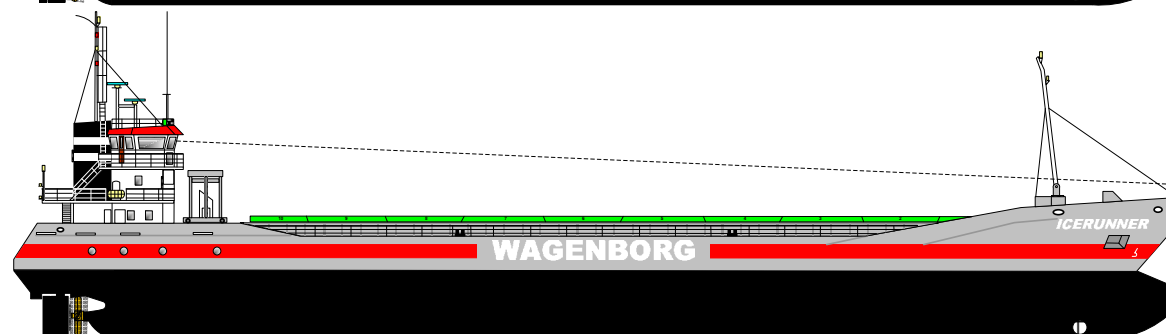
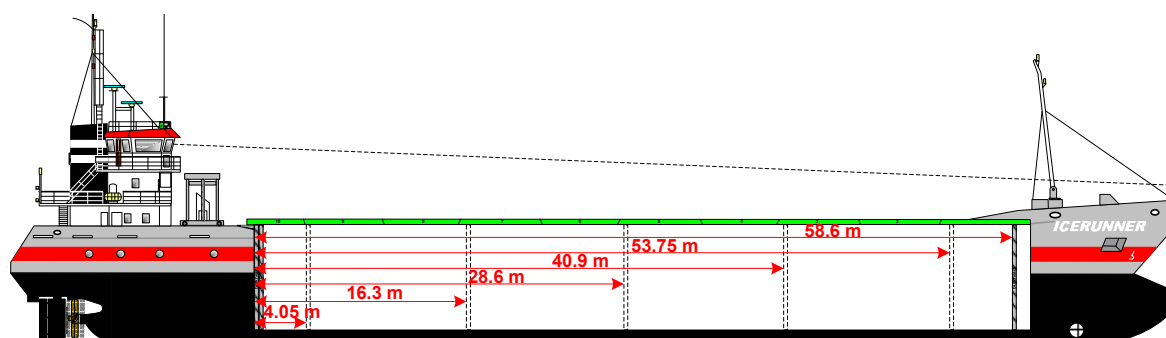
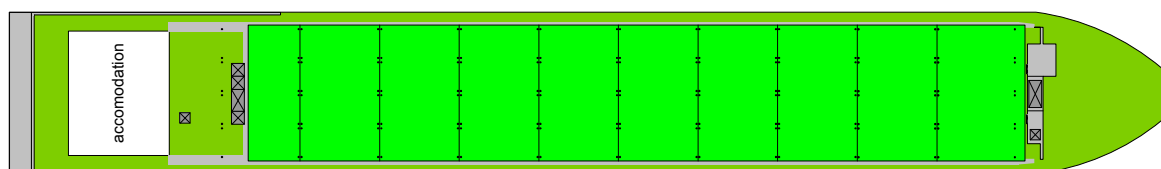
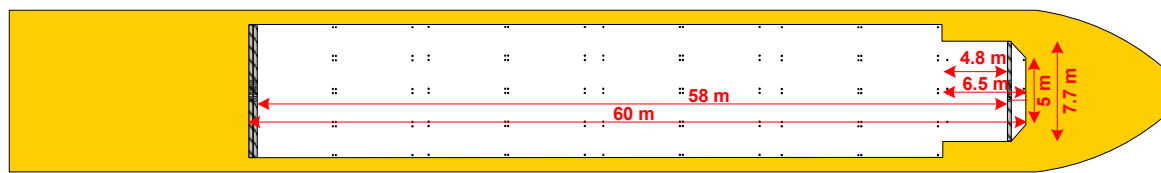


## Wagenborg Shipping

Marktstraat 10, 9934 CK Delfzijl, Netherlands | P.O. Box 14, 9930 AA Delfzijl, Netherlands  
T +31 596 636 911 | E chartering@wagenborg.com | wagenborg.com



# Icerunner-class - stowage plan



## Wagenborg Shipping

Marktstraat 10, 9934 CK Delfzijl, Netherlands | P.O. Box 14, 9930 AA Delfzijl, Netherlands  
T +31 596 636 911 | E [chartering@wagenborg.com](mailto:chartering@wagenborg.com) | [wagenborg.com](http://wagenborg.com)