



# LL-class

TECHNICAL INFORMATION



# LL-class - 7.700 DWCC

Open hatch, box shaped, double skinned, Single-decker, Ice Class 1B. Grain / CO<sub>2</sub> fitted.

## GENERAL PARTICULARS

Ships	Lenneborg, Manisa Emy, Manisa Kate
Shipyard	Nanjing Huatai Shipyard
Classification	Bureau Veritas
Class notations	I HULL MACH General cargo ship - Heavycargo (147 kN/m <sup>2</sup> ) - Heavycargo (147 kN/m <sup>2</sup> ) - Heavycargo Unrestricted navigation AUT-UMS, ICE CLASS IB
Ice class	1B
Port of registry	Delfzijl
Flag	Dutch
Year	2008

## MAIN PARTICULARS

DWAT	8.117	mt
DWCC summer	7.700	mt
Lenght over all	108,19	m
Breadth over all	18,20	m
Draft summer	7,156	m
Draft in ballast	6,864	m
Depth (moulded)	9,00	m
GT	5.598	
NT	2.283	

## ENGINES

Main engine	Wärtsilä 6M32C, 3.000 kW
Bow thruster	280 kW

## HOLDS & HATCHES

Holds	3 Holds / 3 Hatches. Fully open hatch, no understow, fully box and double skinned. Vessel is equipped with 6 cement holes.
Hatches	Hydraulic folding hatches

## CARGO CAPACITIES

Hold dimensions	17,50 x 15,20 x 11,40m
	25,90 x 15,20 x 9,20m
	25,20 x 15,20 x 9,20m
Total intake	360.202 cbft grain/bale
Hold #1	97.113 cbft grain/bale
Hold #2	35.959 cbft grain/bale
Hold #3	27.130 cbft grain/bale

## BULK HEADS AND TWEEN DECKS

Vessel is not fitted with bulkheads.

### Strengths

Max pressure tanktop	15,00 mt/m <sup>2</sup>
Max pressure weatherdeck	2,20 mt/m <sup>2</sup>

### Uniform

15,00 mt/m <sup>2</sup>
2,20 mt/m <sup>2</sup>



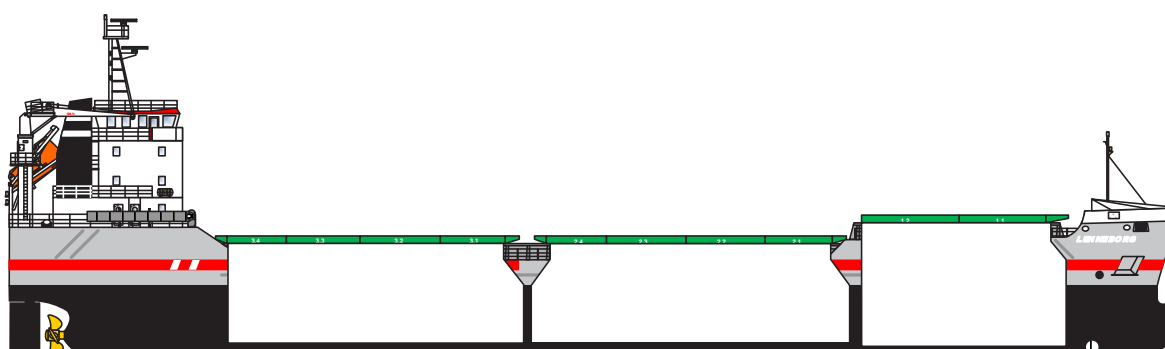
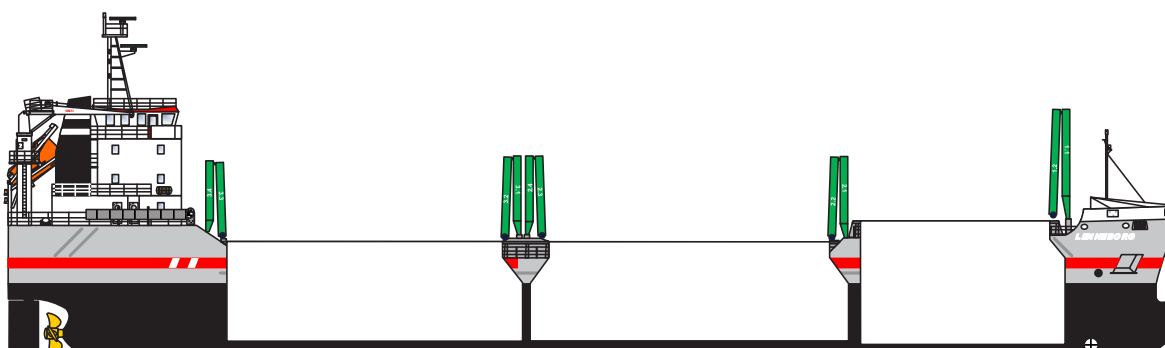
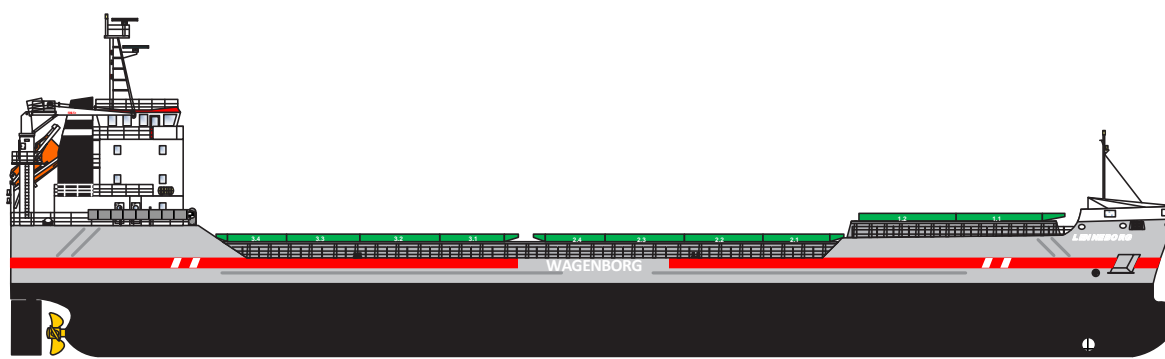
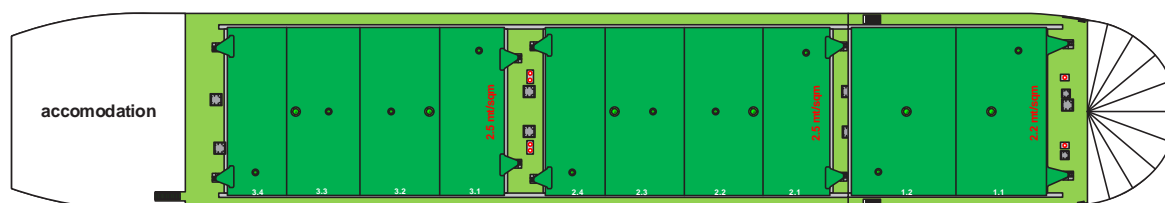
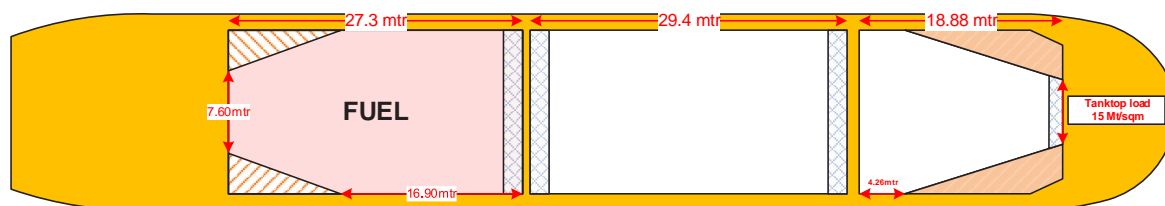
## Wagenborg Shipping

Marktstraat 10, 9934 CK Delfzijl, Netherlands | P.O. Box 14, 9930 AA Delfzijl, Netherlands  
T +31 596 636 911 | E chartering@wagenborg.com | wagenborg.com





# LL-class - stowage plan



## Wagenborg Shipping

Marktstraat 10, 9934 CK Delfzijl, Netherlands | P.O. Box 14, 9930 AA Delfzijl, Netherlands  
T +31 596 636 911 | E chartering@wagenborg.com | wagenborg.com

