



# Vxl-class

TECHNICAL INFORMATION



# Vxl-class - 9.300 DWCC

Single-decker - MPP - Ice Class 1A. Open hatch fully box/ double skinned, Single-decker (incl. 2 movable bulkheads). Lakes /Grain / CO<sub>2</sub> fitted.

## GENERAL PARTICULARS

Ships	Kwintebank, Vancouverborg, Victoriaborg, Virginiaborg
Shipyard	Bodewes Shipyard
Classification	Bureau Veritas
Class notations	I HULL MACH General cargo ship -heavycargo (150 kN/m <sup>2</sup> (nonhomload 200 kN/m <sup>2</sup> )) -nonhomload Container ship Unrestricted navigation AUT-UMS, SYS-NEQ-1, MON-SHAFT, ICE CLASS IA, LASHING
Ice class	Finnish/Swedish 1A
Port of registry	Delfzijl
Flag	Dutch
Year	2001 - 2002

## MAIN PARTICULARS

DWAT	9.857	mt
DWCC summer	9.300	mt
Lenght over all	132,20	m
Breadth over all	15,87	m
Draft summer	7,765	m
Draft in ballast	4,250	m
Depth (moulded)	11,15	m
GT	6.378	
NT	3.099	

## ENGINES

Main engine	Caterpillar MaK 8M32C, 3.840 kW
Bow thruster	500 kW

## HOLDS & HATCHES

Holds	2 Holds / 2 Hatches. Fully open hatch, no understow, fully box and double skinned.
Hatches	Steel pontoon hatches

## CARGO CAPACITIES

Hold dimensions	39,96 x 13,20 x 10,84m
	52,54 x 13,20 x 10,84m
Total intake	454.000 cbft grain/bale
Hold #1	190.000 cbft grain/bale
Hold #2	264.000 cbft grain/bale

## BULK HEADS AND TWEEN DECKS

Vessel is equipped with 2 moveable bulkheads, moveable by means of hatch cover gantry crane.

## Strengths

Max pressure tanktop	15,00 mt/m <sup>2</sup>
Max pressure weatherdeck	1,75 mt/m <sup>2</sup>

## Uniform

Max pressure tanktop	15,00 mt/m <sup>2</sup>
Max pressure weatherdeck	1,75 mt/m <sup>2</sup>

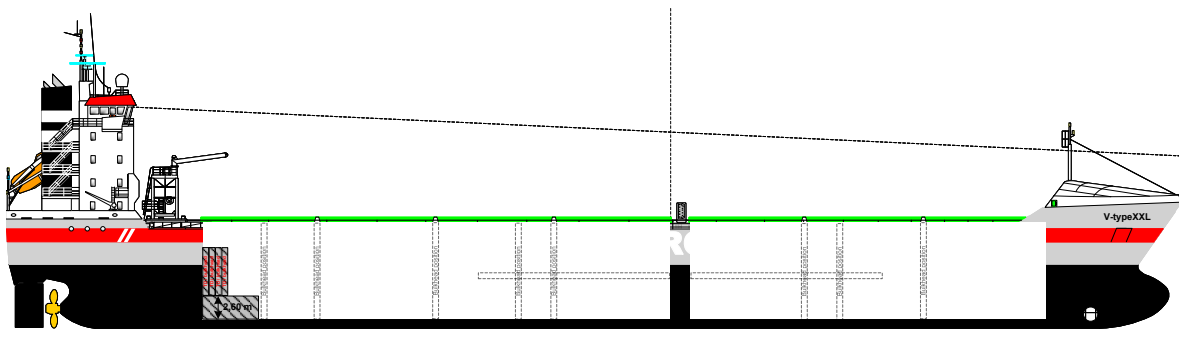
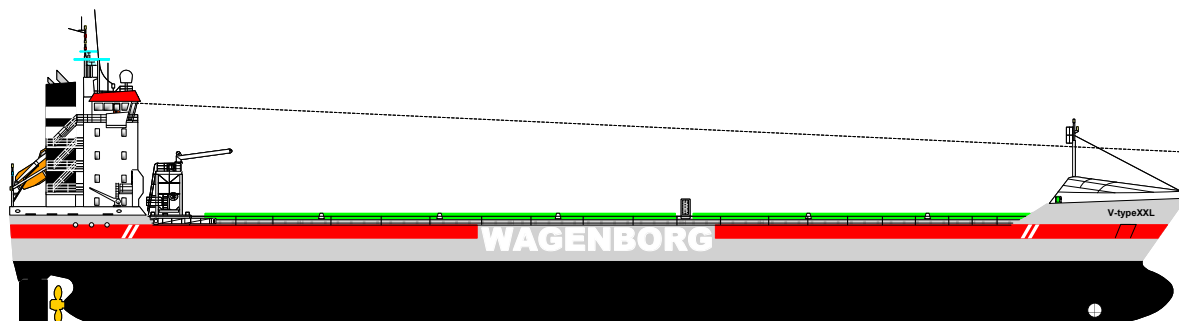
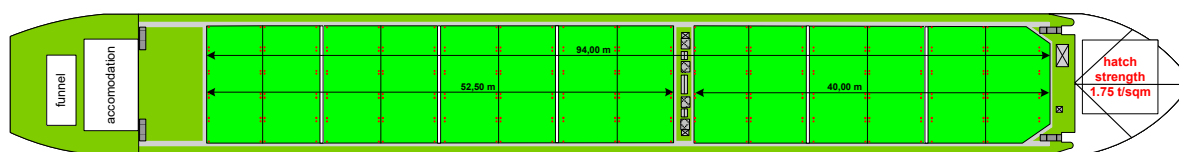
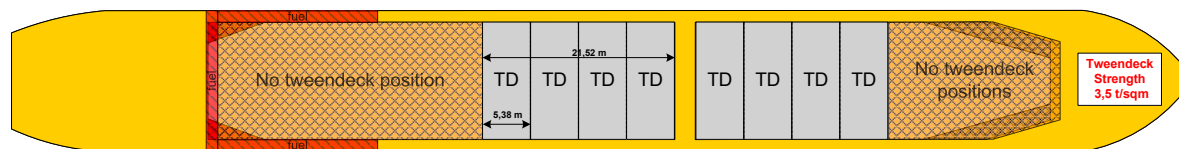
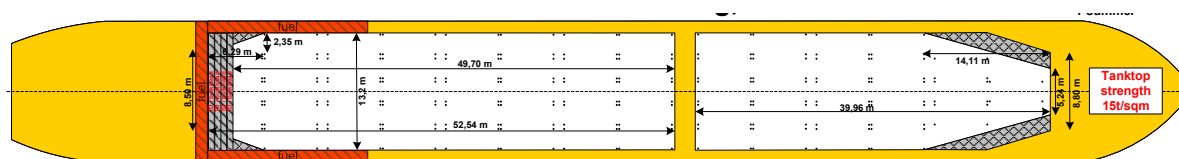


## Wagenborg Shipping

Marktstraat 10, 9934 CK Delfzijl, Netherlands | P.O. Box 14, 9930 AA Delfzijl, Netherlands  
T +31 596 636 911 | E chartering@wagenborg.com | wagenborg.com



# Vxl-class - stowage plan



## Wagenborg Shipping

Marktstraat 10, 9934 CK Delfzijl, Netherlands | P.O. Box 14, 9930 AA Delfzijl, Netherlands  
T +31 596 636 911 | E chartering@wagenborg.com | wagenborg.com